

Chalmers Publication Library



CHALMERS

Copyright Notice IEEE

“©20xx IEEE. Personal use of this material is permitted. However, permission to reprint/republish this material for advertising or promotional purposes or for creating new collective works for resale or redistribution to servers or lists, or to reuse any copyrighted component of this work in other works must be obtained from the IEEE”

(Article begins on next page)

Calculation of Ring-Shaped Phase Centers of Feeds for Ring-Focus Paraboloids

Jian Yang and Per-Simon Kildal, *Fellow, IEEE*

Abstract—Some primary feeds such as the hat feed radiate around the feed waveguide, which also acts as an axial support tube. Such feed antennas have phase centers in the form of rings rather than points. This paper presents a formula to calculate the location of the ring-shaped phase center. The optimum reflector is a ring-focus paraboloid with the ring focus coinciding with the ring-shaped phase center. The phase center formula is applied to two versions of the hat feed and it is shown that the aperture efficiencies can be improved by up to 0.5 dB when optimum ring-focus paraboloids are used instead of point-focus paraboloids.

Index Terms—Hat feed, paraboloids, phase center, reflector antenna, reflector shaping.

I. INTRODUCTION

IN most reflector antennas the feed can be treated as a point source, which means that the phase fronts of the feed are spherical with center of curvature in its phase center. The maximum directivity occurs when the phase center coincides with the focal point of the reflector. Several methods have been used to determine the phase center of a feed in a parabolic reflector. The author of [1] considered an idealized feed pattern for which the phase is constant when the phase reference point is at the phase center. In [2] a more general formula based on the maximization of the aperture efficiency of the reflector was presented. An iterative numerical method with the same basis was used in [3]. In [4] the formula of [2] was improved to be valid also when the radiation field of the feed has large phase variations after transformation to the phase center.

For rear-radiating feeds such as the hat feed [5], there may be large gain reductions due to phase errors even when the feed is located with its phase center at the focus of the reflector. The reason is that such feeds radiate from a circumferential aperture rather than from a planar aperture in free-space and, therefore, the radiation field is better characterized in terms of a ring-shaped phase center than a phase center point. For such feeds, the optimum reflector which maximizes the gain is a so-called “ring-focus” paraboloid [6]. In the present paper, we will introduce a formula to determine the location and radius of such a ring-shaped phase center. The formula can also be used to determine the most optimum ring-focus paraboloid when the same reflector is to be used for several feeds operating in different frequency bands.

It has to be pointed out that at a single frequency, it is possible to shape the reflector directly by using the phase variations of

the copolar feed pattern in order to obtain a uniform phase for the aperture field and to reduce the phase error losses. In this case, the reflector gets a numerically specified shape which is very close to the analytical ring-focus paraboloid considered in the present work. However, when a reflector is to be used in several frequency bands, the analytical ring-focus paraboloid is easier to use for maximizing the aperture efficiency in all bands. The analytical ring-focus paraboloid is also easier to use for analytical tolerance studies.

The present study is limited to BOR_1 type feeds [7], i.e., bodies of revolution excited with a TE_{11} mode in a circular waveguide or similar. The present study is also performed for the case when the reflector is located in the far-field of the feed. This is satisfied for most primary fed reflector. The work is easily extended to near field illumination of a paraboloid or of the hyperboloidal subreflector of a classical Cassegrain, as explained after (2) in Section II.

II. THEORY

Generally, the phase efficiency, which is one of the subaperture efficiencies of a classical rotationally symmetric reflector system, can be expressed as follows [8]:

$$e_\phi = \frac{\left| \int_0^{D/2} E_{co45}(\rho) \rho d\rho \right|^2}{\left[\int_0^{D/2} |E_{co45}(\rho)| \rho d\rho \right]^2} \quad (1)$$

where $E_{co45}(\rho)$ is the copolar field in the 45° plane over the aperture of the reflector. When the feed is located with the origin of its coordinate system (i.e., its phase reference point) in the origin of the coordinate system of the reflector, the aperture field $E_{co45}(\rho)$, which for convenience is assumed at $z = 0$, can be expressed as

$$\begin{aligned} E_{co45}(\rho) &= -\frac{1}{r(\theta)} G_{co45}(\theta) e^{-j[kr(\theta) - kr(\theta) \cos \theta]} \\ &= -\frac{1}{r(\theta)} G_{co45}(\theta) e^{-j2kr(\theta) \cos^2(\theta/2)} \end{aligned} \quad (2)$$

where $G_{co45}(\theta) = |G_{co45}(\theta)| e^{j\phi(\theta)}$ is the copolar far-field function of the feed, and $r(\theta)$ describes the reflector (Fig. 1). Equation (2) means that the reflector is in the far field of the feed. If it is not the case, we can still approximate the copolar aperture field by (2), except that $G_{co45}(\theta)$ does not represent the far-field function. Actually, $G_{co45}(\theta)$ will then be different for different focal length of the reflector. This will cause the optimum phase center to be different in reflectors of different

Manuscript received October 23, 1999; revised November 24, 1999.

The authors are with the Department of Electromagnetics, Chalmers University of Technology, S-412 96 Gothenburg, Sweden.

Publisher Item Identifier S 0018-926X(00)03251-8.

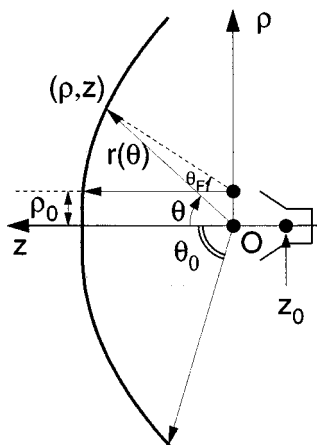


Fig. 1. The coordinate system (ρ, z) of reflector and a feed with the phase reference point at z_0 .

focal length, even when the subtended angles of the reflectors are the same. We will consider a ring-focus paraboloid defined by

$$\rho = 2F \tan(\theta_F/2) + \rho_0$$

and

$$z = F - F \tan^2(\theta_F/2) \quad (3)$$

where

F focal length;

ρ_0 radius of the focus ring;

θ_F defined in Fig. 1.

When $\rho_0 \ll F$, $\theta_F \approx \theta$ and we may use

$$r(\theta) = \sqrt{\rho^2 + z^2} \approx \frac{F}{\cos^2(\theta/2)} \quad (4)$$

$$r(\theta) = \sqrt{\rho^2 + z^2} \approx \frac{F}{\cos^2(\theta/2)} \left[1 + \frac{\rho_0 \sin \theta (1 + \cos \theta)}{2F} \right] \quad (5)$$

in amplitude factors and phase terms, respectively. Using (2), (4), and (5) we may write the phase efficiency as

$$e_\phi = \frac{1}{I_w^2} \left| \int_0^{\theta_0} w(\theta) e^{j[\phi(\theta) - k\rho_0 \sin \theta (1 + \cos \theta)]} d\theta \right|^2 \quad (6)$$

where

θ_0 subtended half angle of the reflector (see Fig. 1);

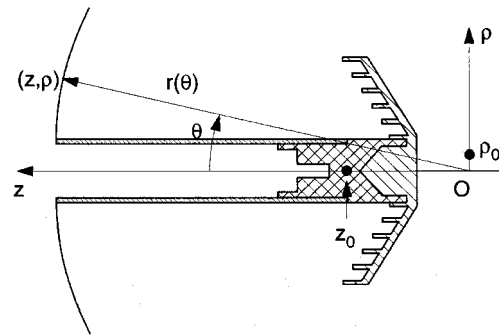
$w(\theta)$ $|G_{\text{co45}}(\theta)| \tan(\theta/2)$;

$\phi(\theta)$ phase of $G_{\text{co45}}(\theta)$;

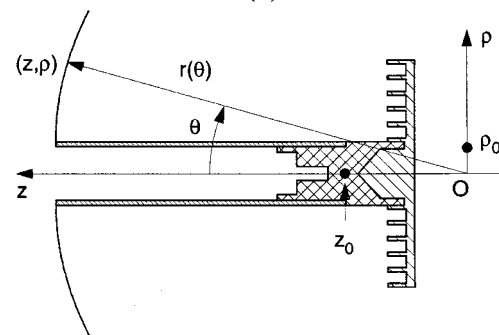
I_w $\int_0^{\theta_0} w(\theta) d\theta$.

We define the ring-shaped phase center of the feed as the location of the focus ring of the optimum ring-focus paraboloid which maximizes the phase efficiency and thereby also the overall aperture efficiency, all in agreement with the definition in [3] for point-focus paraboloids. We will now derive a direct computation formula based on this definition.

The phase function of the copolar pattern of the feed antenna is $\phi_z(\theta) = \phi(\theta) - kz_0 \cos(\theta)$ when the phase reference point is



(a)



(b)

Fig. 2. The reflector antenna with (a) Chinese hat feed and (b) standard hat feed.

moved from the origin to a point z_0 on the symmetry axis in the coordinate system of the feed. This corresponds to locating the feed in such a way that the point $z = z_0$ coincides with the origin of the coordinate system of the reflector. The phase efficiency for this location of the feed in the ring-focus paraboloid in (3) can be written as follows:

$$e_\phi = \frac{1}{I_w^2} \left| \int_0^{\theta_0} w(\theta) e^{j[\phi(\theta) - kz_0 \cos \theta - k\rho_0 \sin \theta (1 + \cos \theta)]} d\theta \right|^2 \quad (7)$$

For convenience, we introduce

$$\phi_0(\theta) = \phi(\theta) - kz_0 \cos \theta - k\rho_0 \sin \theta (1 + \cos \theta). \quad (8)$$

We now assume small phase errors, i.e.,

$$\phi_0(\theta) - \phi_0(0) \ll \frac{\pi}{2}. \quad (9)$$

This limits our treatment to feeds which give small phase errors in optimum ring-focus paraboloids, i.e., when z_0 and ρ_0 are chosen so as to satisfy (9). Then, by Taylor expansion of the phase factor we get [2]

$$e_\phi = 1 - \overline{(\phi_\theta^2)} + \overline{(\phi_\delta^2)} \quad (10)$$

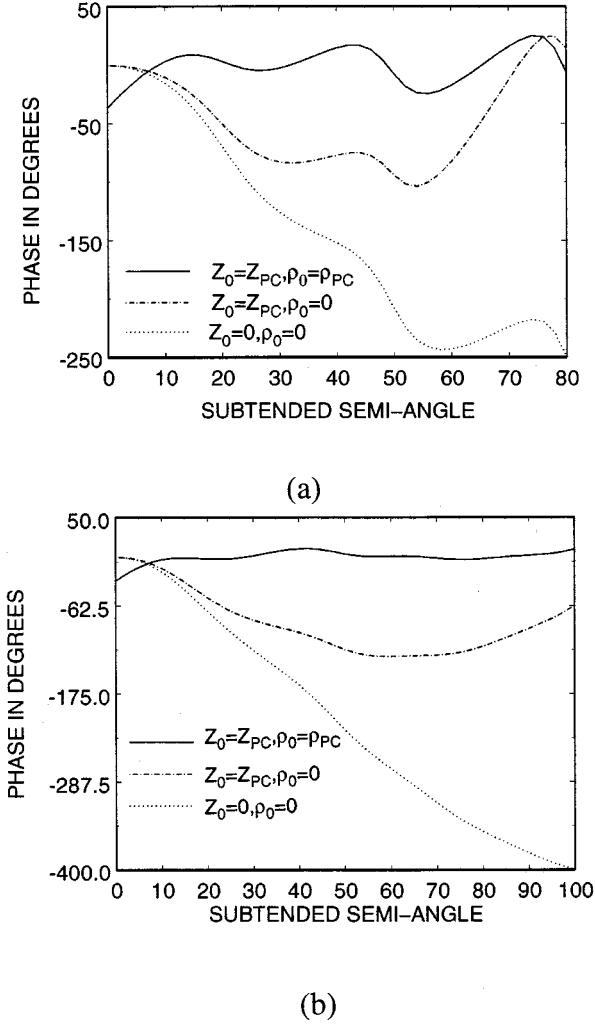


Fig. 3. Phase of copolar aperture field of (a) Chinese hat feed and (b) standard hat feed in different reflectors. $\rho_0 = 0$ means in point-focus paraboloid; $\rho_0 = \rho_{pc}$ means in optimum ring-focus paraboloid; $z_0 = 0$ means initial axial location; $z_0 = z_{pc}$ means optimum axial location.

where $\overline{\phi_\delta}$ and $\overline{(\phi_\delta^2)}$ are the mean and mean-square phase errors, respectively, given by

$$\begin{aligned} \overline{\phi_\delta} &= \frac{1}{I_w} \int_0^{\theta_0} w(\theta) [\phi_0(\theta) - \phi_0(0)] d\theta \\ \overline{(\phi_\delta^2)} &= \frac{1}{I_w} \int_0^{\theta_0} w(\theta) [\phi_0(\theta) - \phi_0(0)]^2 d\theta. \end{aligned} \quad (11)$$

By substituting (8) into (10), we obtain the following expression:

$$e_\phi = a - b(kz_0)^2 - c(k\rho_0)^2 + 2dkz_0 + 2ek\rho_0 - 2fk^2z_0\rho_0 \quad (12)$$

where

$$\begin{aligned} a &= 1 - \frac{I_{w\phi 2}}{I_w} + \frac{I_{w\phi}^2}{I_w^2}; & b &= \frac{I_{wc 2}}{I_w} - \frac{I_{wc}^2}{I_w^2} \\ c &= \frac{I_{ws 2}}{I_w} - \frac{I_{ws}^2}{I_w^2}; & d &= \frac{I_{w\phi c}}{I_w} - \frac{I_{w\phi} I_{wc}}{I_w^2} \\ e &= \frac{I_{w\phi s}}{I_w} - \frac{I_{w\phi} I_{ws}}{I_w^2}; & f &= \frac{I_{wcs}}{I_w} - \frac{I_{wc} I_{ws}}{I_w^2} \end{aligned} \quad (13)$$

with

$$\begin{aligned} I_{w\phi} &= \int_0^{\theta_0} w(\theta) [\phi(\theta) - \phi(0)] d\theta; \\ I_{w\phi 2} &= \int_0^{\theta_0} w(\theta) [\phi(\theta) - \phi(0)]^2 d\theta \\ I_{wc} &= \int_0^{\theta_0} w(\theta) (\cos \theta - 1) d\theta \\ I_{wc 2} &= \int_0^{\theta_0} w(\theta) (\cos \theta - 1)^2 d\theta \\ I_{ws} &= \int_0^{\theta_0} w(\theta) \sin \theta (\cos \theta + 1) d\theta \\ I_{ws 2} &= \int_0^{\theta_0} w(\theta) \sin^2 \theta (\cos \theta + 1)^2 d\theta \\ I_{w\phi c} &= \int_0^{\theta_0} w(\theta) [\phi(\theta) - \phi(0)] (\cos \theta - 1) d\theta \\ I_{w\phi s} &= \int_0^{\theta_0} w(\theta) [\phi(\theta) - \phi(0)] \sin \theta (\cos \theta + 1) d\theta \\ I_{wcs} &= \int_0^{\theta_0} w(\theta) (\cos \theta - 1) \sin \theta (\cos \theta + 1) d\theta \\ &= - \int_0^{\theta_0} w(\theta) \sin^3 \theta d\theta. \end{aligned} \quad (14)$$

III. FORMULA FOR RING-SHAPED PHASE CENTER

Equation (12) has a simple dependence on both z_0 and ρ_0 and, by partial differentiation, e_ϕ can be easily maximized with respect to z_0 and ρ_0 . The results $z_0 = z_{pc}$ and $\rho_0 = \rho_{pc}$ become

$$kz_{pc} = \frac{cd - ef}{bc - f^2}; \quad k\rho_{pc} = \frac{be - df}{bc - f^2} \quad (15)$$

where z_{pc} and ρ_{pc} represent the axial location and radius of the ring-shaped phase center, respectively. Then $\rho_0 = \rho_{pc}$ also defines the optimum ring-focus paraboloid for the feed, which maximizes the aperture efficiency if the feed is located correctly with $z_0 = z_{pc}$ in the center of the coordinate system of the reflector when the reflector is defined by (3).

The formula for ρ_{pc} is and should be independent of the location of the origin of the coordinate system of the feed, i.e., the initial phase reference point of the radiation pattern of the feed, as long as it is on the symmetry axis. This can be shown as follows. Assume that $\phi_1(\theta)$ is the phase of the radiation pattern of the feed when the phase reference point is located at z_1 . Then, the phase of the radiation pattern of the feed will be

$$\phi_1(\theta) = \phi_0 - k(z_1 - z_0) \cos \theta \quad (16)$$

when the phase reference point is moved from z_0 to z_1 . From (13) and (14), the denominator of (15), $cb - f^2$, will not be affected by this change of reference point, whereas e and d will be affected and from (14) we get

$$\begin{aligned} I_{w\phi}|_{z_1} &= I_{w\phi}|_{z_0} - k(z_1 - z_0) I_{wc} \\ I_{w\phi c}|_{z_1} &= I_{w\phi c}|_{z_0} - k(z_1 - z_0) I_{wc 2} \\ I_{w\phi s}|_{z_1} &= I_{w\phi s}|_{z_0} - k(z_1 - z_0) I_{wcs}. \end{aligned} \quad (17)$$

TABLE I
COMPARISON OF CALCULATED VALUES OF PHASE CENTER LOCATIONS AND PHASE EFFICIENCIES IN DECIBELS BY USING DIFFERENT METHODS

	Chinese hat feed ($\theta_0 = 80^\circ$)			Standard hat feed ($\theta_0 = 100^\circ$)		
	z_{pc}/λ	ρ_{pc}/λ	e_ϕ (dB)	z_{pc}/λ	ρ_{pc}/λ	e_ϕ (dB)
Method in [1]	0.84	—	-0.73	0.95	—	-0.84
Method in [2]	0.87	—	-0.71	0.91	—	-0.63
Method in [3]	0.89	—	-0.69	0.80	—	-0.45
Method in [4]	0.89	—	-0.69	0.81	—	-0.45
Present Method	0.89	0.43	-0.17	0.81	0.33	-0.02

TABLE II
OPTIMUM AXIAL LOCATIONS WITH GIVEN RING-FOCUS PARABOLOID FOR MULTIBAND APPLICATION. $\Delta\rho$ IS THE DIFFERENCE BETWEEN RADIUS OF PHASE CENTER RING AND RING FOCUS. MEAN FREQUENCY $(f_{\max} + f_{\min})/2$ IS 30.45 GHz

f_0 in different bands	The given focus ring error	Axial location as in optimum reflector		With best axial location	
	$\Delta\rho/\lambda$	$\Delta z/\lambda$	e_ϕ (dB)	$\Delta z/\lambda$	e_ϕ (dB)
22.4 GHz	-0.08	0.0	-0.25	0.10	-0.10
25.5 GHz	-0.05	0.0	-0.12	0.06	-0.04
28.5 GHz	-0.02	0.0	-0.08	0.02	-0.03
38.5 GHz	0.08	0.0	-0.25	-0.10	-0.10

By substituting (17) into (13) and (15), we obtain

$$\begin{aligned}
 k\rho_{pc}|_{z1} &= \frac{1}{bc - f^2} (be|_{z1} - d|_{z1}f) \\
 &= \frac{1}{bc - f^2} (be|_{z0} - d|_{z0}f) \\
 &= k\rho_{pc}|_{z0}. \tag{18}
 \end{aligned}$$

In the same way, it can be shown that z_{pc} is also independent of the initial phase reference point of the radiation pattern of the feed.

Thus, we can conclude that as long as the assumption of (9) is valid, the formula (15) is valid. This corresponds in practice to that the resulting phase efficiency in the optimum reflector must be better than about -1 dB.

IV. OPTIMUM AXIAL POSITION WITH GIVEN RING-FOCUS PARABOLOID

We will now consider the optimum axial location of the feed in a given nonoptimum ring-focus paraboloid. Equation (12) is valid also for this case and the optimum location z_{opt} is found by maximizing e_ϕ with respect to z_0 when ρ_0 is constant. This gives

$$z_{opt} = \frac{b}{ck} - \frac{f}{b} \rho_0. \tag{19}$$

We can also introduce $z_{opt} = z_{pc} + \Delta z$ and $\rho_0 = \rho_{pc} + \Delta\rho$, for which case the optimum axial location of the feed

$$\Delta z = -\frac{f}{b} \Delta\rho \tag{20}$$

compared to its best location in the optimum ring-focus paraboloid. The corresponding maximum phase efficiency in the given nonoptimum ring-focus paraboloid is

$$e_{\phi opt} = e_{\phi \max} - \left(c - \frac{f^2}{b}\right) (k\Delta\rho)^2 \tag{21}$$

where $e_{\phi \max}$ is the phase efficiency in the optimum ring-focus paraboloid. These formulas are very useful when designing reflectors to be used for feeds in multiple frequency bands. It can readily be shown that if a ring-focus paraboloid is to be used with several different feeds between a lowest frequency f_{\min} and a highest frequency f_{\max} , which may be several octaves different, the optimum reflector should be designed at the mean frequency $(f_{\max} + f_{\min})/2$. Then, the phase efficiency has its highest value at the mean frequency, and its lowest value occurs at and is the same for both f_{\min} and f_{\max} . Equation (21) is also convenient to find the tolerance requirement on the axial feed location.

V. APPLICATION

The above formulas have been applied to hat fed reflectors. The hat feed is made of a straight circular tube with a corrugated plate (hat) at the end, which is mounted to the tube by means of a small dielectric piece (head) (see Fig. 2). The hat fed reflector can provide extremely low sidelobes and the manufacture cost is low. Two kinds of hat fed reflectors are used for the present analysis: a Chinese hat feed in a ring-focus paraboloid with a subtended semi-angle of 80° [Fig. 2(a)] [9] and a standard hat feed in a ring-focus paraboloid with a subtended semi-angle of 100° [Fig. 2(b)] [10]. The amplitude and phase functions of the copolar radiation field were calculated by the V2D code [11] based on the finite-difference time-domain (FDTD) method (Fig. 3). In both cases the outer radius of the circular waveguide is 0.5λ . In comparison, we have used the previous methods, which were mentioned in the introduction, to calculate the phase center of the hat feed and the corresponding phase efficiency. The results are shown in Table I. From Fig. 3 and Table I, one observes that, by using a ring-focus paraboloid, the phase efficiencies are considerably better than those for a standard parab-

olid. For the standard hat feed, the ring-focus paraboloid has a considerably high phase efficiency of -0.02 dB. An interesting phenomenon is that the radius of the ring focus is not equal to the outer radius of the circular waveguide. One can also observe that for the two cases in Table I, the axial locations of the phase centers are equal to those determined by using the point phase center formulas in [3] and [4]. This is because the iterative numerical methods in [3] and [4] are valid for the general cases and the present work gives the analytic solution for a specific case of them.

In order to reduce manufacture cost, the same reflector may be used for different hat feeds in several frequency bands. Then, by using (21), it is very easy to find the optimum axial position of the feed and the corresponding phase efficiency. Table II presents the results for the geometry considered in this work. One can see that the phase efficiency can be improved by 0.15 dB at both the highest and the lowest frequency simply by axially relocating the feeds 0.1λ away from its phase center in the optimum reflector.

VI. CONCLUSION

We have presented a method of determining the optimum ring-focus paraboloid for a feed with a ring-shaped phase center. The method provides both the location of the phase center of the feed and the optimum reflector shape. For the examples studied, the phase efficiency can be improved by 0.5 dB by using the ring-focus phase center formula. The method also provides a very efficient and easy way to maximize the aperture efficiency in all frequency bands when the same ring-focus reflector is used in several frequency bands, simply by relocating the feeds in this given nonoptimum ring-focus parabolic reflector. The improvement of the aperture efficiency can in this case be 0.15 dB. It is also easy to use this method for studying the tolerances of the reflector and feed location.

ACKNOWLEDGMENT

The authors would like to thank J. Flodin for his inspiration and his remark from which this work was initiated; he showed the authors that the optimum reflector, which was calculated from the phase pattern of the feed and presented as a list of coordinates has nearly the same shape as a ring-focus paraboloid.

REFERENCES

- [1] Y. Y. Hu, "A method of determining phase centers and its application to electromagnetic horns," *J. Franklin Inst.*, pp. 31–36, 1961.
- [2] P. S. Kildal, "Combined E- and H-plane phase centers of antenna feed," *IEEE Trans. Antennas Propagat.*, vol. AP-31, pp. 199–202, Jan. 1983.
- [3] K. Sudhakar Rao and L. Shafai, "Phase center calculations of reflector antenna feeds," *IEEE Trans. Antennas Propogat.*, vol. AP-32, pp. 740–742, July 1984.
- [4] J. Yang and P.-S. Kildal, "Calculation of phase centers of feeds for reflectors when the phase variations are large," in *Proc. 1998 IEEE AP-S Int. Symp.*, Atlanta, GA, June 1998, pp. 2050–2053.
- [5] J. Hansen, A. Kishk, P.-S. Kildal, and O. Dahlsjö, "High performance reflector hat antenna with very low sidelobes for radio-link applications," in *Proc. 1995 IEEE AP-S Int. Symp.*, Newport Beach, CA, June 1995, pp. 893–896.
- [6] C. C. Cutler, "Parabolic-antenna design for microwaves," in *Proc. IRE*, vol. 35, Nov. 1947, pp. 1284–1294.
- [7] P.-S. Kildal and Z. Sipus, "Classification of rotationally symmetric antennas in $BO R_0$ and $BO R_1$ types," *IEEE Antennas Propagat. Mag.*, vol. 37, pp. 114–117, Dec. 1995.

- [8] P.-S. Kildal, "Factorization of the feed efficiency of paraboloids and cassegrain antennas," *IEEE Trans. Antennas Propagat.*, vol. AP-33, pp. 903–908, Aug. 1985.
- [9] J. Yang and P.-S. Kildal, "FDTD design of a Chinese hat feed for shallow mm-wave reflector antennas," in *Proc. 1998 IEEE AP-S Int. Symp.*, Atlanta, GA, June 1998, pp. 2046–2049.
- [10] P.-S. Kildal and J. Yang, "FDTD optimizations of the bandwidth of the hat feed for mm-wave reflector antennas," in *Proc. 1997 IEEE AP-S Int. Symp.*, Montreal, Canada, July 1997, pp. 1638–1641.
- [11] W. K. Gwarek, "V2D-Solver version 1.9: A software package for electromagnetic modeling of microwave circuits of vector 2-D class," (in (e-mail gwarek@ire.pw.edu.pl)), Warzaw Univ. Technol..



Jian Yang was born in Nanjing, China, on August 2, 1960. He received the B.S. degree from the East China Institute of Technology, Nanjing, China, in 1982, and the M.S. degree from Nanjing Research Centre of Electronic Engineering in 1985, Nanjing, China, both in electrical engineering, and the Swedish Licentiate Eng. degree from Chalmers University of Technology, Gothenburg, Sweden, in 1998. He is currently working toward the Ph.D. degree from Chalmers University of Technology.

From 1985 to 1996, he was with Nanjing Research Institute of Electronics Technology, Nanjing, China, as a Senior Engineer. Since 1999, he has worked as a Research Engineer in the Department of Electromagnetics, Chalmers University of Technology. His research interests include hat-fed antenna, reflector antenna, slot array antenna, and numerical computation of electromagnetics.



Per-Simon Kildal (M'82–SM'84–F'95) was born in Norway on July 4, 1951. He received the M.S.E.E., Ph.D., and Doctor Technicae degrees from the Norwegian Institute of Technology (NTH), Trondheim, Norway, in 1976, 1982, and 1990, respectively.

He was with ELAB (the Electronics Research laboratory) at NTH from 1979 to 1989, and was a Principal Research Scientist from 1986. He is now a Professor at the Department of Microwave Technology at Chalmers University of Technology, Gothenburg Sweden. Since 1984, he has been a Consultant for Cornell University, Ithaca, NY, in connection with the upgrading of the radio telescope in Arecibo, Puerto Rico. He is also consulting for others via his own company, Kildal Antenna Consulting AB. This company also develops and markets commercial software for synthesis and analysis of reflector antennas. Kildal is an efficient and accurate programmer in both FORTRAN and Mathcad. He has been largely involved in the electrical design of some large antennas and is the inventor of three granted patents, and he has in addition applications that are not yet granted. He is also involved in new company in Gothenburg, which has been formed for developing and marketing microwave sensors for different application. The sensors are based on a recent patent application. He is the principal author of more than 40 articles in international journals and more than 40 papers at international conferences. All papers are within the area of antenna theory and design. His specialty is reflector antennas.

Dr. Kildal served from 1991 to 1994 as a Distinguished Lecturer of the IEEE Antennas and Propagation Society. He offered two lectures on the concept of artificially soft and hard surfaces for electromagnetic waves and on the techniques for synthesis and analysis of reflector antennas that was developed in connection with the design of the dual-reflector feed for the radio telescope in Arecibo. He was an elected member of IEEE AP-S AdCom (Administration Committee of IEEE Antennas and Propagation Society) for the period 1995–1997, and served as an Associate Editor of the IEEE TRANSACTIONS ON ANTENNAS AND PROPAGATION from June 1995 until July 1998. ELAB awarded his work in 1984, in connection with an industrial project where the results of his reflector antenna research were applied. He received the R.W.P. King Award for the Best Paper by a Young Author in IEEE TRANSACTIONS ON ANTENNAS AND PROPAGATION in 1984 (about the EISCAT cylindrical reflector antenna). Later he received the S.A. Schelkunoff Transactions Prize Paper Award for the Best Paper in 1990 in the same IEEE TRANSACTIONS (about the synthesis of the dual-reflector feed for the Arecibo radio telescope). He has given invited lectures in plenary sessions at four conferences (Antem 92 in Winnepeg, 23rd EuMC 93 in Madrid, MIKON 94 in Poland, and JINA 94 in Nice).