



CHALMERS

Chalmers Publication Library

Low-Temperature Criticality of Martensitic Transformations of Cu Nanoprecipitates in alpha-Fe

This document has been downloaded from Chalmers Publication Library (CPL). It is the author's version of a work that was accepted for publication in:

Physical Review Letters (ISSN: 0031-9007)

Citation for the published paper:

Erhart, P. ; Sadigh, B. (2013) "Low-Temperature Criticality of Martensitic Transformations of Cu Nanoprecipitates in alpha-Fe". *Physical Review Letters*, vol. 111(2), pp. 025701.

<http://dx.doi.org/10.1103/PhysRevLett.111.025701>

Downloaded from: <http://publications.lib.chalmers.se/publication/181511>

Notice: Changes introduced as a result of publishing processes such as copy-editing and formatting may not be reflected in this document. For a definitive version of this work, please refer to the published source. Please note that access to the published version might require a subscription.

Chalmers Publication Library (CPL) offers the possibility of retrieving research publications produced at Chalmers University of Technology. It covers all types of publications: articles, dissertations, licentiate theses, masters theses, conference papers, reports etc. Since 2006 it is the official tool for Chalmers official publication statistics. To ensure that Chalmers research results are disseminated as widely as possible, an Open Access Policy has been adopted. The CPL service is administrated and maintained by Chalmers Library.

(article starts on next page)

Low-Temperature Criticality of Martensitic Transformations of Cu Nanoprecipitates in α -Fe

Paul Erhart^{1,2,*} and Babak Sadigh^{2,†}

¹*Department of Applied Physics, Chalmers University of Technology, 41296 Gothenburg, Sweden*

²*Condensed Matter and Materials Division, Lawrence Livermore National Laboratory, Livermore, California 94551, USA*

(Received 6 February 2013; revised manuscript received 24 May 2013; published 9 July 2013)

Nanoprecipitates form during nucleation of multiphase equilibria in phase segregating multicomponent systems. In spite of their ubiquity, their size-dependent physical chemistry, in particular, at the boundary between phases with incompatible topologies, is still rather arcane. Here, we use extensive atomistic simulations to map out the size-temperature phase diagram of Cu nanoprecipitates in α -Fe. The growing precipitates undergo martensitic transformations from the body-centered cubic (bcc) phase to multiply twinned 9R structures. At high temperatures, the transitions exhibit strong first-order character and prominent hysteresis. Upon cooling, the discontinuities become less pronounced and the transitions occur at ever smaller cluster sizes. Below 300 K, the hysteresis vanishes while the transition remains discontinuous with a finite but diminishing latent heat. This unusual size-temperature phase diagram results from the entropy generated by the soft modes of the bcc-Cu phase, which are stabilized through confinement by the α -Fe lattice.

DOI: [10.1103/PhysRevLett.111.025701](https://doi.org/10.1103/PhysRevLett.111.025701)

PACS numbers: 64.70.kd, 64.70.Nd, 64.75.Jk, 81.30.Hd

The Fe-Cu system is a prototypical structurally mismatched system with very small solubility of Cu in Fe. At low temperatures, Fe adopts the body-centered cubic (bcc) phase, while Cu prefers the face-centered cubic (fcc) phase, with bcc Cu being mechanically unstable. Phase segregation in Fe-Cu alloys also has been and continues to be the subject of considerable technological interest since Cu impurities contribute to the high-temperature embrittlement of ferritic steels [1]. Based on a series of careful experimental studies, three stages in the transformation of Cu precipitates have been identified [2–4]: (i) Cu precipitates nucleate in the bcc structure of the host lattice; (ii) as they grow, they undergo a martensitic phase transition to a multiply twinned 9R structure, which (iii) eventually transforms into fcc [5]. In this Letter, using a novel combination of molecular dynamics (MD) and Monte Carlo (MC) simulations as well as empirical interatomic potentials, we develop a comprehensive picture of the correlation between precipitate structure and size as a function of temperature for the first two stages of the transformation process.

The Fe-Cu system was modeled using semiempirical interatomic potentials [13–15] that provide an accurate description of the alloy phase diagram and yield very good agreement with density-functional theory calculations for the energies of small Cu clusters in bcc Fe. In particular, they reproduce the very small solubility of Cu in Fe (0.06% at 700 K). Simulations were carried out using the hybrid MC-MD algorithm described in Ref. [16] and implemented in the massively parallel MD code LAMMPS [17]. The MC part of this algorithm is based on the variance constrained semi-grand-canonical (VC-SGC) ensemble [18]. Unlike the widely used semi-grand-canonical ensemble [19], it allows stabilization of multiphase equilibria

and thereby enables, for example, studying the properties of precipitates. In contrast to the canonical ensemble, which could in principle also be used for this task, the VC-SGC MC approach can be parallelized very efficiently, enabling large scale simulations. Orthorhombic simulation cells were employed with cell vectors oriented along [111], $[1\bar{1}0]$, and $[11\bar{2}]_{\text{bcc}}$. For most runs, supercells containing $42 \times 52 \times 45$ unit cells (786 240 atoms) were employed with additional simulations using $31 \times 38 \times 33$ unit cells (310 992 atoms). Using the VC-SGC technique, the total Cu concentration was constrained inside the miscibility gap to trigger the formation of Cu precipitates. We used concentrations of up to 4.75% leading to maximum precipitate sizes of approximately 36 500 atoms. Simulations were run for at least 1.6×10^6 and up to 4×10^6 MD steps using a time step of 2.5 fs. Every 20 steps, the MD simulation was interrupted to carry out a number of MC trial moves corresponding to 10% of a full MC sweep. Each simulation run thus comprised between 8000 and 20 000 attempts per particle to swap the atom type. The atomic structures were analyzed using the Ackland-Jones parameter [20], which uses bond angle distributions to classify local environments as bcc, fcc, or hexagonal close packed (hcp). The accuracy of this analysis was enhanced by position averaging over 800 MD steps.

Figure 1 exhibits precipitate structures observed in simulations at 700 K. Initially, Cu precipitates are isostructural with the surrounding bcc-Fe matrix, as shown exemplarily in Fig. 1(a) by a precipitate containing approximately 15 000 atoms. Even larger precipitates undergo a structural transformation from the bcc phase to a multiply twinned 9R structure as illustrated in Fig. 1(b) where a cluster containing about 36 000 Cu atoms is shown. The 9R phase is a closed-packed (CP) lattice that differs from fcc through its

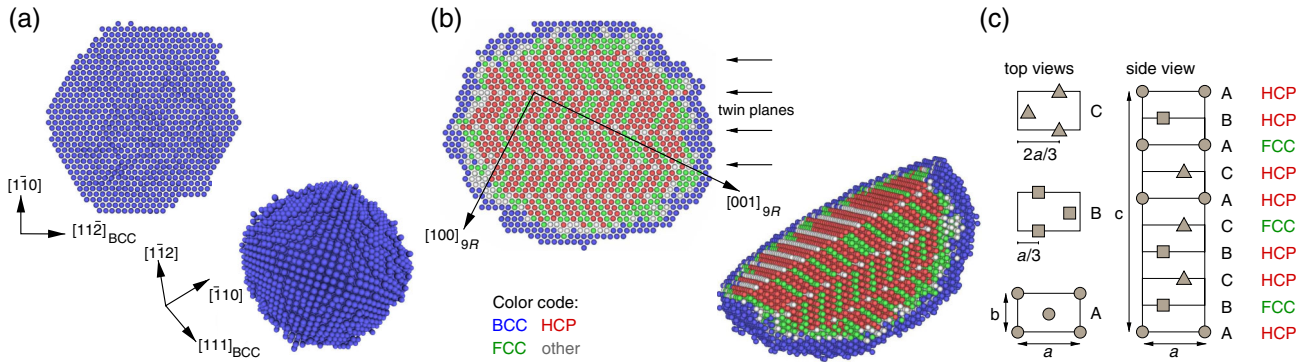


FIG. 1 (color online). (a), (b) Cross sectional (top) and perspective (bottom) views [42] of (a) bcc and (b) twinned 9R Cu precipitates at 700 K. The precipitates contain approximately 15 000 and 36 000 atoms, respectively. The 9R precipitate in (b) exhibits a pronounced bcc wetting layer. (c) Schematic of 9R structure [2,3] which appears as a periodic sequence of two hcp atoms and one fcc atom along the $[001]_{9R}$ direction when using the Ackland-Jones parameter.

stacking sequence of the CP planes, as shown on the right-hand side of Fig. 1(c). Using the Ackland-Jones parameter for structure identification, we obtain sequences of fcc and hcp atoms in Fig. 1(b) that are in accord with the ideal 9R structure; cf. Fig. 1(c). In addition, we observe stacking faults as well as several twins as indicated by arrows in Fig. 1(b). These results closely resemble the TEM micrographs of 9R Cu precipitates in α -Fe [2–4]. Further analysis reveals that parameters such as twin spacing and misorientation angles also agree very well with experiments.

In order to map out the size-temperature phase diagram of Cu nanoprecipitates, we recorded the number of Cu atoms in CP or bcc local environments as a function of precipitate size at various temperatures. The open symbols in Fig. 2(a) show the evolution of these populations with increasing precipitate size at 700 K. Precipitates exceeding 28 000 atoms are found to undergo a *discontinuous* structural transition as they transform from bcc to multiply twinned 9R structures. To study the reverse transition, we started from a 9R precipitate obtained from an earlier simulation and gradually reduced the Cu content in the simulation. The thus obtained data are shown by the filled symbols in Fig. 2(a), demonstrating that at approximately 18 000 atoms, precipitates revert to the bcc structure. There is thus a pronounced hysteresis between forward (bcc \rightarrow 9R) and backward (9R \rightarrow bcc) transitions at 700 K extending from about 18 000 to 28 000 atoms.

The above analysis was repeated for six temperatures between 200 and 700 K, the results of which lead to the size-temperature phase diagram depicted in Fig. 3. It demonstrates that the critical cluster size for the bcc-9R transition is strongly temperature dependent, increasing from approximately 2700 atoms (3.9 nm diameter) at 200 K to about 22 000 atoms (7.9 nm) at 700 K. Figure 2 also contains data points obtained by Monzen and co-workers in an exhaustive study of 9R precipitates annealed at different temperatures [21]. Using TEM observations, they documented a change in the angle enclosed by $\{001\}_{9R}$

planes in neighboring twin segments with precipitate size, which they interpreted as evidence for a temperature-dependent martensitic bcc-9R transition. The present simulations fully support this interpretation and are in very good agreement with the experimentally derived transition sizes.

The simulations enable us to resolve the thermodynamic aspects of the transition. At high temperatures, the transition is decidedly first order with a pronounced hysteresis that vanishes below 300 K, whereupon the transition becomes *nearly continuous*. This is depicted in Fig. 2(b), where the numbers of bcc and CP atoms change around the critical size of 2700 atoms reversibly with negligible

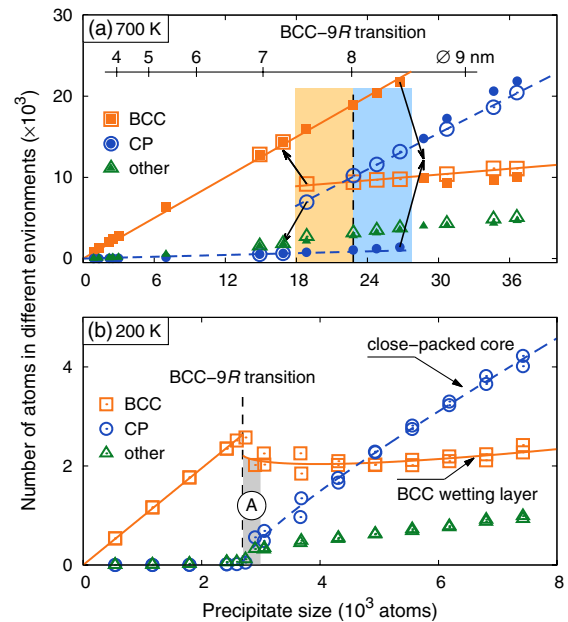


FIG. 2 (color online). Number of atoms in different local environments at (a) 700 K and (b) 200 K. Filled and open symbols in (a) show results from forward (bcc \rightarrow 9R) and backward (9R \rightarrow bcc) simulations, respectively. The bcc-9R transition exhibits a hysteresis at higher temperatures [shaded region in (a)] that vanishes as temperature is lowered.

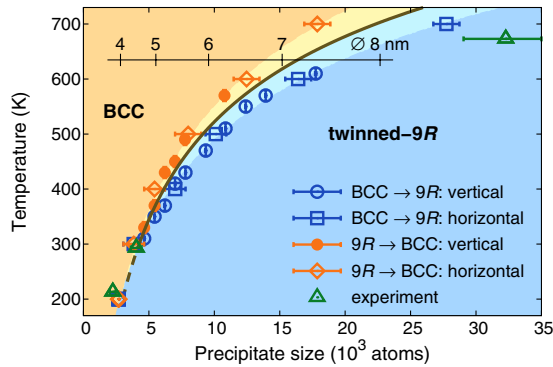


FIG. 3 (color online). Diagram representing the structure of Cu precipitates as a function of temperature and size. The light colored regions next to the phase transition line delineate the extent of the hysteresis. The hysteretic critical point is located along the dashed line between 200 and 300 K. The experimental data points are from Ref. [21].

discontinuity. A more detailed inspection of the precipitate structure at 200 K (see movies and snapshots in the Supplemental Material [22]) shows that precipitates below the transition point (2700 atoms) have completely adopted a bcc lattice structure, while precipitates containing more than 3000 atoms exhibit multiply twinned 9R structures as described above. In the intermediate size range [region A in Fig. 2(b)], the atoms that constitute the core of the precipitate rapidly fluctuate between different CP motifs. These fluctuations are absent at higher temperatures where the bcc-9R transition is sharp.

It is important to note that irrespective of temperature even after the transition to 9R, the precipitates still contain a substantial number of bcc atoms, which grows with precipitate size, albeit much slower than the number of CP atoms. This observation reflects the existence of a bcc-Cu wetting layer between the bcc-Fe matrix and the CP core of the Cu precipitate. It can be as thick as 4 atomic layers at the transition point at 200 K, while it only amounts to about 1 to 2 atomic layers for very large precipitates. The bcc-Cu wetting layer is also clearly visible in Fig. 1(b). In the following, we will see that the wetting layer plays a crucial role in the bcc-9R transition, particularly at low temperatures.

An important signature of first-order transitions is the release of latent heat, which is absent in continuous transitions [23]. To resolve the character of the observed transitions, we have extracted the internal energy density of the Cu atoms in the precipitates as a function of precipitate size at various temperatures as shown in Fig. 4(a). At high temperatures, the data exhibit pronounced discontinuities when the higher-energy bcc phase transforms to the more stable 9R phase. As the temperature is lowered, the discontinuity in the potential energy is reduced until it apparently vanishes between 200 and 300 K; see Fig. 4(b). If true, this implies that a critical point exists in this temperature range, below which the bcc-9R transition

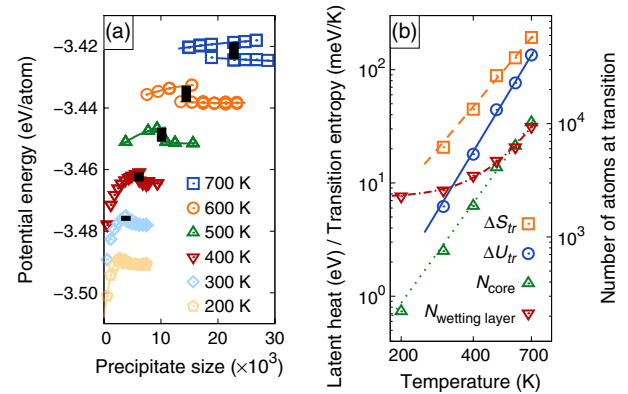


FIG. 4 (color online). (a) Potential energy of atoms in Cu precipitates as a function of precipitate size for different temperatures. The vertical black bars represent the latent heat ΔU_{tr} associated with the transformation, which is plotted in (b) as a function of temperature alongside the entropy change at the transition ($\Delta S_{tr} = \Delta U_{tr}/T_{tr}$). The upward (downward) pointing triangles show the number of core (wetting layer) atoms at the transition. Lines are guides to the eye.

occurs continuously. However, the observation of a continuous transition contradicts bulk thermodynamics, according to which the distinct lattice symmetries require the bcc-9R transformation to be first order. Can this rule be violated for precipitate sizes as astoundingly large as 2500 to 3000 atoms?

The key to answering this question lies in the heterogeneous distribution of energy and entropy inside Cu precipitates. For the purpose of this discussion, we estimate entropy by employing the Debye model for the vibrational spectrum, which provides a simple relation between entropy and mean square displacement (MSD) [24]. Figures 5(a) and 5(b) show the average atomic potential energies (PE), and Figs. 5(c) and 5(d) depict the MSD as a function of distance to the centers of precipitates at 700 K for several bcc and 9R precipitates. The PE and MSD profiles of the bcc precipitates have similar shapes with a constant region in the core that remains unchanged as the precipitates grow. The wetting layer is identified as the region outside the core where both the PE and the MSD of the Cu atoms drop steeply. This confirms that the vibrational entropy of the core region of bcc precipitates is much larger than the wetting layer entropy. It leads to the stabilization of bcc precipitates at elevated temperatures and derives from the vibrational modes of bulk bcc Cu with imaginary frequencies that are stabilized through confinement by the Fe matrix.

Inspection of the PE and MSD profiles of the 9R precipitates in Figs. 5(b) and 5(d) reveals a more complex behavior than in the case of the bcc precipitates. While the wetting layer seems to be quite similar in size, energy, and entropy to the bcc precipitates, the core now consists of two regions: (i) the inner core with uniform energy and entropy and (ii) the outer core, which constitutes the

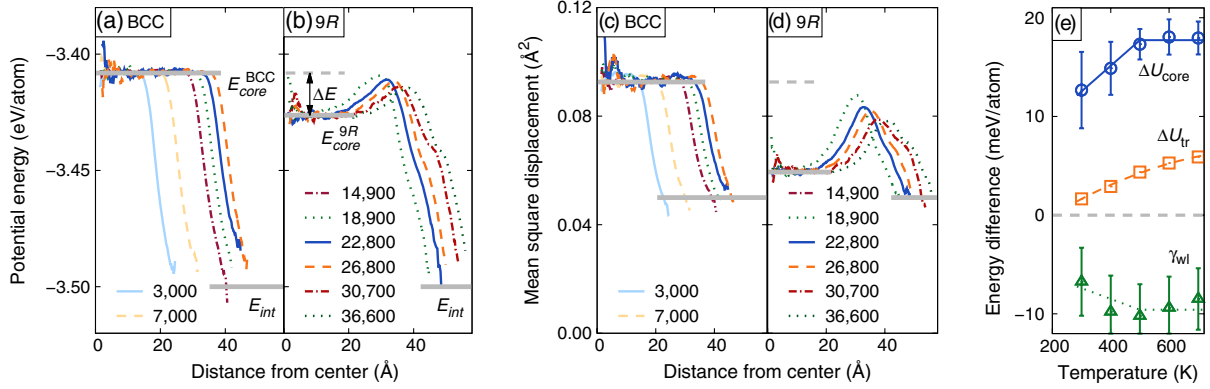


FIG. 5 (color online). (a), (b) Potential energy and (c), (d) mean square displacement as a function of distance from the precipitate center for (a), (c) bcc and (b), (d) 9R precipitates at 700 K. (e) Latent heat ΔU_{tr} [from Fig. 4(b)] as well as core ΔU_{core} and wetting layer γ_{wl} energy differences between bcc and 9R precipitates obtained by analyzing PE profiles.

interface region between the twinned 9R inner core and the wetting layer. It is strained to accommodate the misorientation between the inner-core 9R lattice and the bcc-Fe matrix. In this region, both energy and MSD increase but never exceed the values of the core of the bcc precipitates. Hence, the 9R core always contributes positively to the latent heat. However, the total latent heat ΔU_{tr} generated by the structural transformation is always smaller than the core contribution since the wetting layer energy is always slightly lower in bcc than in 9R precipitates. The total latent heat and its associated entropy $\Delta S_{tr} = \Delta U_{tr}/T$ are shown in Fig. 4(b). Both decrease dramatically upon cooling, mainly because at lower temperatures, transitions involve much fewer atoms as they occur at much smaller cluster sizes. Furthermore, at lower temperatures, the latent heat per atom drops significantly [see Fig. 5(e)] due to the fact that in smaller precipitates, the core region, which provides the positive contribution to the latent heat, shrinks while the compensating wetting layer thickens. This is supported by the number of atoms in the core and the wetting layer regions at the transition as depicted in Fig. 4(b).

Nevertheless, based on the reported temperature dependence of the entropy of transformation in Fig. 4(b), one expects the bcc-9R transformation to involve a diminishing but finite latent heat at temperatures clearly below the critical temperature (≈ 300 K) at which the hysteresis vanishes. Note that at this temperature, as many as 500 Cu atoms form the core of the 9R precipitate and thus directly participate in the transformation; see Fig. 4(b). These observations thus support the existence of a dynamic critical point in the bcc-9R transition of Cu nanoprecipitates. At this temperature, the nucleation barrier between the two phases disappears. The microscopic origin of this behavior lies in the mechanical instability of bulk bcc Cu on the one hand and the stabilization of a bcc wetting layer with stiff phonon modes at the interface with the bcc-Fe host lattice on the other.

It is important to note that while our observations cannot prove the existence of a thermodynamic critical point

(TCP) in the bcc-9R transition of Cu nanoprecipitates, they suggest that the phase diagrams of nanoprecipitates may contain TCPs that have no counterpart in the corresponding bulk thermodynamic limit. It is of course well known that the phase diagrams of nanoparticulate systems deviate from the bulk due to confinement. In particular, the loci of phase boundaries become size dependent, and thus phase transition temperatures and pressures are modified for liquid-gas [25], liquid-solid [26–30], as well as solid-solid transformations [31–40]. Furthermore, dynamic critical points leading to vanishing hysteresis have been observed to precede the TCP in liquid-gas transitions [25,41]. In contrast, one might expect the first-order character of transitions between phases with distinct symmetries to be conserved. The presence of a TCP in bcc-9R transformations of Cu nanoprecipitates violates this expectation. It is caused by the heterogeneous nature of nanoprecipitates, where the total latent heat can vanish with the core and wetting layer regions exhibiting compensating discontinuities. This heterogeneity is best illustrated in Fig. 5(e), which shows the total latent heat per atom, as well as the inner core and wetting layer energy differences between bcc and 9R precipitates. For temperatures above 500 K, the contribution to the latent heat from the inner-core region reaches its asymptotic limit. Below this temperature, this contribution is slowly reduced as the inner-core region is gradually shrinking and becoming strained. Figure 5(e) demonstrates that the latent heat per atom can nearly vanish while significant differences in the energetics of bcc and 9R precipitates remain. This points to the fact that the balance between wetting layer and core energies is fundamental to the low-temperature criticality in this system. Furthermore, if a TCP existed, higher-order derivatives of the free energy would become discontinuous rather than diverge.

The phenomenology described in this work not only has direct consequences for our understanding of the Fe-Cu system but transpires to many more materials. Based on the analysis presented here, one can anticipate the occurrence of similar effects in other immiscible

systems, whenever the minority phase is unstable in the lattice structure of the host.

Parts of this work were performed under the auspices of the U.S. Department of Energy by LLNL under Contract No. DE-AC52-07NA27344. P.E. acknowledges funding from the Swedish Research Council in the form of a Young Researcher Grant and the *Area of Advance—Materials Science* at Chalmers, and the European Research Council in the form of a Marie-Curie Career Integration Grant. B.S. acknowledges funding from the DOE-NE NEAMS Program. Computer time allocations by the Swedish National Infrastructure for Computing at C3SE (Gothenburg) and PDC (Stockholm) are gratefully acknowledged.

*erhart@chalmers.se

†sadigh1@llnl.gov

- [1] G. R. Odette and G. E. Lucas, *JOM* **53**, 18 (2001).
- [2] P. J. Othen, M. L. Jenkins, G. D. W. Smith, and W. J. Phythian, *Philos. Mag. Lett.* **64**, 383 (1991).
- [3] P. J. Othen, M. L. Jenkins, and G. D. W. Smith, *Philos. Mag. A* **70**, 1 (1994).
- [4] T.-H. Lee, Y.-O. Kim, and S.-J. Kim, *Philos. Mag.* **87**, 209 (2007).
- [5] The structural instability associated with bcc-9R transitions [6] has also been studied in simulations at lower temperatures with a focus on pathway and the effect of vacancies [7–12].
- [6] S. Kajiwara, *Trans. Jpn. Inst. Met.* **17**, 435 (1976).
- [7] W. J. Phythian, A. J. E. Foreman, C. A. English, J. T. Buswell, M. Hetherington, K. Roberts, and S. Pizzini, in *Effects of Radiation on Materials: 15th International Symposium*, edited by R. E. Stoller, A. S. Kumar, and D. S. Gelles (ASTM STP, Philadelphia, 1992), Vol. STP1125 p. 1299.
- [8] G. J. Ackland, D. J. Bacon, A. F. Calder, and T. Harry, *Philos. Mag. A* **75**, 713 (1997).
- [9] Y. N. Osetsky and A. Serra, *Philos. Mag. A* **75**, 1097 (1997).
- [10] M. Ludwig, D. Farkas, D. Pedraza, and S. Schmauder, *Model. Simul. Mater. Sci. Eng.* **6**, 19 (1998).
- [11] J. J. Blackstock and G. J. Ackland, *Philos. Mag. A* **81**, 2127 (2001).
- [12] Y. Le Bouar, *Acta Mater.* **49**, 2661 (2001).
- [13] Y. Mishin, M. J. Mehl, D. A. Papaconstantopoulos, A. F. Voter, and J. D. Kress, *Phys. Rev. B* **63**, 224106 (2001).
- [14] M. I. Mendeleev, S. Han, D. J. Srolovitz, G. J. Ackland, D. Y. Sun, and M. Asta, *Philos. Mag.* **83**, 3977 (2003).
- [15] R. C. Pasianot and L. Malerba, *J. Nucl. Mater.* **360**, 118 (2007).
- [16] B. Sadigh, P. Erhart, A. Stukowski, A. Caro, E. Martinez, and L. Zepeda-Ruiz, *Phys. Rev. B* **85**, 184203 (2012).
- [17] S. Plimpton, *J. Comput. Phys.* **117**, 1 (1995).
- [18] B. Sadigh and P. Erhart, *Phys. Rev. B* **86**, 134204 (2012).
- [19] D. Frenkel and B. Smit, *Understanding Molecular Simulation* (Academic Press, London, 2001).
- [20] G. J. Ackland and A. P. Jones, *Phys. Rev. B* **73**, 054104 (2006).
- [21] R. Monzen, M. L. Jenkins, and A. P. Sutton, *Philos. Mag. A* **80**, 711 (2000).
- [22] See Supplemental Material at <http://link.aps.org/supplemental/10.1103/PhysRevLett.111.025701> for snapshots and movies of the bcc-9R transition at low temperature.
- [23] Since the equilibrium volumina of bcc ($11.80 \text{ \AA}^3/\text{atom}$) and 9R Cu ($11.81 \text{ \AA}^3/\text{atom}$) are almost identical, contributions due to the pressure-volume term can be safely neglected.
- [24] By parametrizing effective Debye models for the vibrational spectra of the two phases of interest, one can approximate their entropy difference as $\Delta S = (1/2)k_B \ln(\langle \Delta r_i^2 \rangle / \langle \Delta r_1^2 \rangle)$, where $\langle \Delta r_i^2 \rangle$ is the MSD of phase i .
- [25] P. C. Ball and R. Evans, *Langmuir* **5**, 714 (1989).
- [26] M. Takagi, *J. Phys. Soc. Jpn.* **9**, 359 (1954).
- [27] J. R. Sambles, *Proc. R. Soc. A* **324**, 339 (1971).
- [28] A. N. Goldstein, C. M. Echer, and A. P. Alivisatos, *Science* **256**, 1425 (1992).
- [29] P. R. Couchman and W. A. Jesser, *Nature (London)* **269**, 481 (1977).
- [30] P. Buffat and J.-P. Borel, *Phys. Rev. A* **13**, 2287 (1976).
- [31] S. H. Tolbert and A. P. Alivisatos, *Science* **265**, 373 (1994).
- [32] C.-C. Chen, A. B. Herhold, C. S. Johnson, and A. P. Alivisatos, *Science* **276**, 398 (1997).
- [33] K. Jacobs, D. Zaziski, E. C. Scher, A. B. Herhold, and A. P. Alivisatos, *Science* **293**, 1803 (2001).
- [34] S. H. Tolbert and A. P. Alivisatos, *J. Chem. Phys.* **102**, 4642 (1995).
- [35] S. Schlag and H. Eicke, *Solid State Commun.* **91**, 883 (1994).
- [36] M. H. Frey and D. A. Payne, *Phys. Rev. B* **54**, 3158 (1996).
- [37] R. Lopez, T. E. Haynes, L. A. Boatner, L. C. Feldman, and R. F. Haglund, *Phys. Rev. B* **65**, 224113 (2002).
- [38] Z. Wang, X.-D. Wen, R. Hoffmann, J. S. Son, R. Li, C.-C. Fang, D.-M. Smilgies, and T. Hyeon, *Proc. Natl. Acad. Sci. U.S.A.* **107**, 17 119 (2010).
- [39] S. Xiong, W. Qi, B. Huang, M. Wang, Z. Li, and S. Liang, *J. Phys. Chem. C* **116**, 237 (2012).
- [40] P. M. Abdala, A. F. Craievich, and D. G. Lamas, *RSC Adv.* **2**, 5205 (2012).
- [41] A. V. Neimark and A. Vishnyakov, *J. Phys. Chem. B* **110**, 9403 (2006).
- [42] A. Stukowski, *Model. Simul. Mater. Sci. Eng.* **18**, 015012 (2010).