

Discovery of five low-luminosity active galactic nuclei at the centre of the Perseus cluster

Songyoun Park,^{1,2}★† Jun Yang,^{3,4} J. B. Raymond Oonk^{5,6} and Zsolt Paragi⁴

¹Department of Astronomy, Yonsei University, Seoul 03722, Republic of Korea

²Korea Astronomy and Space Science Institute, Daejeon 34055, Republic of Korea

³Department of Earth and Space Sciences, Chalmers University of Technology, Onsala Space Observatory, SE-439 92 Onsala, Sweden

⁴Joint Institute for VLBI ERIC (JIVE), Postbus 2, NL-7990 AA Dwingeloo, the Netherlands

⁵Netherlands Institute for Radio Astronomy (ASTRON), Postbus 2, NL-7990 AA Dwingeloo, the Netherlands

⁶Leiden Observatory, Leiden University, PO Box 9513, NL-2300 RA Leiden, the Netherlands

Accepted 2016 November 18. Received 2016 November 17; in original form 2016 March 7

ABSTRACT

According to optical stellar kinematics observations, an overmassive black hole candidate has been reported by van den Bosch et al. in the normal early-type galaxy NGC 1277. This galaxy is located in the central region of the Perseus cluster. Westerbork Synthesis Radio Telescope observations have shown that NGC 1277 and other early-type galaxies in the neighbourhood have radio counterparts. These nuclear radio sources have stable flux densities on a time-scale of years. In order to investigate the origin of the radio emission from these normal galaxies, we selected five sources (NGC 1270, NGC 1272, NGC 1277, NGC 1278 and VZw 339) residing in the central 10-arcmin region of the Perseus cluster and requested to re-correlate the data of an existing very long baseline interferometry (VLBI) experiment at these new positions. With the re-correlation data provided by the European VLBI Network (EVN), we imaged the five sources with a resolution of about 8 mas and detected all of them with a confidence level above 5σ at 1.4 GHz. They show compact structure and brightness temperatures above 10^7 K, which implies that the radio emission is non-thermal. We rule out ongoing nuclear star formation and conclude that these VLBI-detected radio sources are parsec-scale jet activity associated with the supermassive black holes in low-luminosity active galactic nuclei, although there are no clear signs of nuclear activity observed in the optical and infrared bands. Using the Fundamental Plane relation in black holes, we find no significant evidence for or against an extremely massive black hole hiding in NGC 1277.

Key words: galaxies: individual: NGC 1277 – galaxies: jets – radio continuum: galaxies.

1 INTRODUCTION

Recently, the early-type galaxy NGC 1277 in the Perseus cluster received much attention because, according to stellar kinematics observations, it most likely hides an overmassive black hole of $\sim 10^{10} M_{\odot}$ (van den Bosch et al. 2012; Yıldırım et al. 2015). Galaxies with the most massive black holes are interesting on their own, because they may serve as probes for black hole formation models (Khan, Holley-Bockelmann & Berczik 2015, and references therein), may indicate capture of a runaway black hole (Shields & Bonning 2013) and may constrain black hole–galaxy coevolution models (Croton et al. 2006; Somerville et al. 2008).

The most massive black holes are also excellent targets to test accretion theory models (Fabian et al. 2013). The ultramassive black hole in NGC 1277 may be still actively accreting mass, although it is located in a normal galaxy according to optical and infrared (IR) observations. Westerbork Synthesis Radio Telescope (WSRT) observations revealed a compact radio counterpart with a total flux density of 2.9 mJy at 1.4 GHz (e.g. Sijbring 1993). We also noticed that there are more radio detections of the normal early-type galaxies in the wide-field WSRT image of the Perseus cluster. Their radio emission is likely related to parsec-scale jet activity, powered by their central supermassive black holes, rather than star formation. In order to verify this scenario, we imaged five galaxies, including NGC 1277, in the central region of the Perseus cluster with the very long baseline interferometry (VLBI) technique.

VLBI imaging observations are a direct and reliable way of revealing low-luminosity active galactic nuclei (LLAGNs; $L_{\text{Ho}} < 10^{40}$ erg s⁻¹, Ho, Filippenko & Sargent 1997). Supporting VLBI

* E-mail: sypark@astro.snu.ac.kr

† Present address: Department of Physics and Astronomy, Seoul National University, Seoul 08826, Republic of Korea.

Table 1. Summary of the EVN imaging results of the five early-type galaxies in the central region of the Perseus cluster. The columns are the following: source name, right ascension (J2000), declination (J2000), redshift, peak brightness, rms noise, restoring beam major and minor axes, position angle, model-fitted circular Gaussian component flux density, radius and brightness temperature lower limit.

Name	RA (h m s)	Dec. ($^{\circ}$ $'$ $''$)	z	Peak (mJy beam $^{-1}$)	rms	Major (mas)	Minor (mas)	PA ($^{\circ}$)	S_{ν} (mJy)	Radius (mas)	T_B (10^8 K)
NGC 1270	03:18:38.109	+41:28:12.424	0.017	4.68	0.29	10.61	6.80	-3.80	6.28	4.9	≥ 1.7
NGC 1272	03:19:21.283	+41:29:26.594	0.013	0.34	0.06	10.58	6.44	-4.09	0.33	2.7	≥ 0.3
NGC 1277	03:19:51.485	+41:34:24.867	0.017	0.84	0.06	10.16	6.34	-4.55	0.84	0.6	≥ 14.8
NGC 1278	03:19:54.131	+41:33:48.246	0.020	2.62	0.14	9.33	5.70	-5.58	2.97	2.3	≥ 3.5
VZw 339	03:20:00.880	+41:33:13.597	0.017	1.71	0.10	10.31	6.18	-5.75	2.21	4.1	≥ 0.8

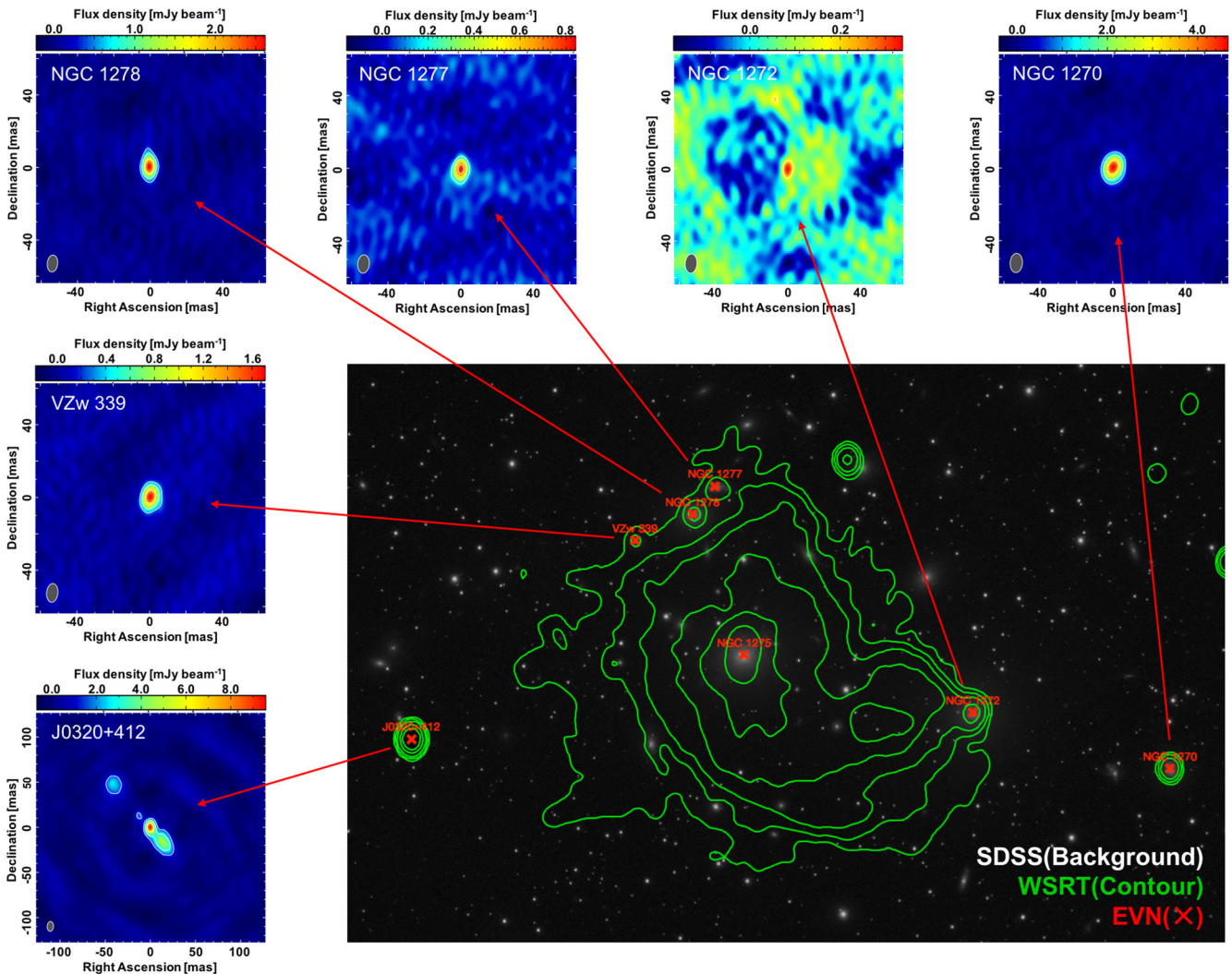


Figure 1. Combined image of the radio-optical images with compact radio sources detected from the EVN observation on an mas scale. The EVN maps of our five early-type galaxies and the phase-reference check source (J0320+412) are presented at the top and left-hand side. The contour levels on the VLBI images are powers of two times the 3σ rms noise level. The green contours represent the 1.4-GHz WSRT radio continuum (Sijbring 1993) that is overlaid on an SDSS g -band image.

evidence for AGN emission often includes quite high brightness temperatures ($T_B \gg 10^5$ K), radio luminosities exceeding that of nearby known nuclear supernova remnant (SNR) complexes ($L_{1.4\text{GHz}} > 10^{22} \text{WHz}^{-1}$) and non-thermal flat radio spectra (see Alexandroff et al. 2012, and references therein). The radio emission may also come from nuclear star formation activity in the host galaxies (Kimball et al. 2011; Padovani et al. 2011; Bonzini et al. 2013), while most of the star formation related radio emission

typically has $T_B \leq 10^4$ K (Condon et al. 1991). Young radio supernovae (SNe) and SNRs may appear as compact sources in some cases (e.g. Kewley et al. 2000), while they have a decaying flux density and are often resolvable at the later stage with milliarcsecond (mas) resolution (e.g. Perez-Torres et al. 2009).

The five early-type galaxies with WSRT radio counterparts are listed in Table 1. They were selected because they are within a circle of about 5 arcmin from 3C 84, one of the central galaxies in the

Perseus cluster. The selection criteria enabled us to reuse an existing European VLBI Network (EVN) experiment, which was designed to study the H I gas in NGC 1275/3C 84 (Oonk et al., in preparation), by re-correlation of the raw data at new positions. To get sub-mJy image sensitivity, we restrict our targets within the main beam of the Effelsberg 100-m radio telescope (full width at half-maximum: about 10 arcmin at 1.4 GHz). This instrumental restriction implies that we can investigate only a handful of the most centrally located early-type galaxies in the Perseus cluster, and as such, this sample is not complete in any sense.

This paper is organized as follows. In Section 2, we describe the EVN observation and our data reduction methods. In Section 3, we present the VLBI detection of these WSRT sources. In Section 4, we discuss the possible explanations for the VLBI imaging results and the implications for an overmassive black hole in NGC 1277. In Section 5, we conclude that all the five early-type galaxies are most likely LLAGNs.

Throughout this paper, we assume a cosmology with $\Omega_m = 0.3$, $\Omega_\Lambda = 0.7$ and $H_0 = 70 \text{ km s}^{-1} \text{ Mpc}^{-1}$. At $z = 0.017$, the mean redshift of the five galaxies, an angular size of 1 mas corresponds to a linear size of 0.3 pc.

2 OBSERVATIONS AND DATA REDUCTION

Besides the five target galaxies listed in Table 1, we included J0320+412, an ~ 50 mJy radio source that is located in our field of interest while not associated with the Perseus cluster, in the re-correlation. This check source was used to verify the quality of the data correlation and phase-referencing calibration.

The EVN observations were carried out at 1.4 GHz for 12 h on 2012 October 18 (project code: EO009). The participating telescopes were Effelsberg (Ef), WSRT, Jodrell Bank (MK2), Onsala, Medicina, Noto, Torun, Zelenchukskaya, Badary and Urumqi. The data were recorded with a bit rate of 256 Mbps using a bandwidth of 2×16 MHz and 2-bit sampling. The re-correlation was done in a single pass with the multiphase centre correlation function provided by the EVN Software Correlator at JIVE (SFXC; Keimpema et al. 2015). The re-correlation data have an integration time of 2 s and 32 channels for each sub-band.

We used the Astronomical Image Processing System (AIPS; Greisen 2003) software for the data reduction and followed standard procedures outlined in the EVN Data Analysis Guide.¹ A priori amplitude calibration was done with the measured gain curves and system temperatures for most of the telescopes, except for Zelenchukskaya and Badary. The absence of amplitude calibration data at Russian stations will not significantly affect the final total flux density measurements since these measurements are dependent mainly on the short European baselines. Note that the WSRT phased-array data were flagged out because its synthesized beam is too narrow (about 15 arcsec) to include any target sources. We carried out fringe-fitting, bandpass calibration and self-calibration on the in-beam calibrator 3C 84. After each step, we copied the calibrator solutions to each target source data set. The antenna primary beam correction was done using a simple circular Gaussian model (e.g. Cao et al. 2014). The residual systematic amplitude calibration error is expected to be about 5 per cent (1σ).

The final editing, model-fitting of the uv -data and imaging were carried out in DIFMAP (Shepherd, Pearson & Taylor 1994). Some data on the shortest baselines were also flagged out due to interference

from the nearby very bright source 3C 84. We fitted a single circular Gaussian component to the observed visibility data for each of the target sources in order to constrain its size. Because of the low signal-to-noise ratios, phase self-calibration was avoided. To maximize the image sensitivity, we used natural weighing in the final clean images. The total flux density, the source positions (relative to 3C 84) and the angular size, measured via model-fitting, are listed in Table 1. The total flux density errors assume a 5 per cent systematic error, in addition to the rms noise in the image. The estimated positional error is about 1 mas. We also tried to fit a point source model to the visibility data. The fitting results are also as good as the ones observed by using a circular Gaussian model. Therefore, all the angular sizes are most likely upper limits.

3 PARSEC-SCALE RADIO SOURCES IN THE NORMAL EARLY-TYPE GALAXIES

The EVN imaging results of the five early-type galaxies are shown in Fig. 1. All the target sources clearly reveal compact radio emission above the 5σ detection level in the EVN images. In the dirty images, these sources clearly showed the beam structure, further supporting that all of them are genuine detections. These VLBI-detected radio sources are spatially coincident with the nuclei of these galaxies. Comparing with the position of the X-ray counterparts observed in NGC 1277, NGC 1278 and VZw 339 with *Chandra* or *ROSAT*, the position differences are within ~ 0.1 arcsec, consistent with their formal position errors.

The bright phase-referencing check source J0320+412 was treated in the same way as these target sources during the data reduction. It has a typical linear jet structure that is consistent with the results of using phase self-calibration. This again assured us that our in-beam phase-referencing calibration scheme worked well.

Brightness temperatures of the sources were determined using the formula

$$T_B \text{ (K)} = 1.22 \times 10^{12} (1+z) \frac{S_\nu}{\theta^2 \nu^2}, \quad (1)$$

where z is the redshift, S_ν is the flux density in Jy, θ is the radius of the fitted Gaussian model component in mas and ν is the observing frequency in GHz. Considering that our angular sizes are an upper limit, the equation will provide a lower limit on the brightness temperature. The estimated brightness temperatures are $\geq 3 \times 10^7$ K for the five sources. They are significantly larger than a typical value in the range of $\sim 10^4$ – 10^5 K, observed in star-forming regions. Therefore, the VLBI-detected radio emission most likely comes from a non-thermal synchrotron radiation mechanism.

We also reanalysed 1.4-GHz WSRT images observed in 1987, 1994 and 2003 (Sijbring 1993; de Bruyn, private communication). These images have an angular resolution of about 15 arcsec. Comparing the fluxes at these different epochs showed that there was no significant variability over 16 yr for the five sources.

The WSRT flux densities at 1.4 GHz are listed in Table 2. Comparing them with the EVN images, we found that more than 30 per cent of the radio emission was recovered in four out of five galaxies. In the case of VZw 339, the EVN flux density was almost the same as that of WSRT. This implies that the radio emission of this galaxy comes mainly from a region quite compact on the parsec scale. The missing flux in the EVN maps may imply the existence of radio structure with an angular size smaller than the WSRT beam (~ 15 arcsec) while significantly larger than the EVN beam (~ 8 mas). This is a well-known instrumental effect caused by the absence of short baselines of the EVN observations.

¹ http://www.evlbi.org/user_guide/guide/userguide.html

Table 2. The columns are the following: source name, 1.4 GHz flux density from WSRT (Sijbring 1993), 1.4 GHz flux density ratio of EVN (our observation) and WSRT (Sijbring 1993), implied star formation rates per unit area from our EVN observation, the total star formation rates derived from the radio (EVN), FIR, H α and X-ray luminosities, and the X-ray luminosity measured by *Chandra* (Santra et al. 2007).

Name	S_{ν} (WSRT) (mJy)	Ratio (EVN/WSRT)	SSFR _{radio} (EVN) ($10^6 M_{\odot} \text{ yr}^{-1} \text{ kpc}^{-2}$)	SFR _{radio} (EVN) ($M_{\odot} \text{ yr}^{-1}$)	SFR _{FIR} ($M_{\odot} \text{ yr}^{-1}$)	SFR _{Hα} ($M_{\odot} \text{ yr}^{-1}$)	SFR _{X-ray} ($M_{\odot} \text{ yr}^{-1}$)	log L_X (0.5–7 keV) (erg s^{-1})
NGC 1270	13.10	0.48	1.0	2.6	<0.6	<0.1	–	–
NGC 1272	13.00	0.03	0.4	0.2	<0.3	<0.1	–	–
NGC 1277	2.85	0.29	14.5	0.6	<0.8	<0.1	4.7	40.37
NGC 1278	4.90	0.61	2.2	1.9	<0.8	0.9	0.9	39.65
VZw 339	2.25	0.98	0.1	1.2	–	0.2	0.6	39.49

In the case of NGC 1272, the EVN restored only 3 per cent of total flux density because it has significant jet emission on the kiloparsec scale (McBride & McCourt 2014).

4 DISCUSSION

4.1 Nature of the VLBI-detected radio emission

Nuclear radio emission is ubiquitous in the most massive early-type galaxies (e.g. Brown et al. 2011). They are either related to nuclear stellar activities, such as star formation and SNRs, or jets powered by the central supermassive black holes.

It has been known for some time that many nearby elliptical and S0 galaxies contain nuclear radio sources smaller than about a few hundred parsecs, as shown by high-resolution observations with the Very Large Array (VLA; Sadler, Jenkins & Kotanyi 1989; Wrobel & Heeschen 1991; Nyland et al. 2016). Optical spectroscopy of these VLA-unresolved radio sources in nearby early-type galaxies showed that they are most likely powered by LLAGNs as opposed to star formation, since they showed signs of non-thermal emission at a level that could not be explained by SNRs (Sadler et al. 1989). In most cases, the spectra are characteristic of low-ionization nuclear emission-line regions and Seyfert galaxies (Ho 1999). Furthermore, when looked at with VLBI, a significant fraction had maximum brightness temperatures well exceeding 10^5 K, often in flat/inverted spectrum compact cores, and/or had resolved jets (Slee et al. 1994; Nagar et al. 2000, 2002; Nagar, Falcke & Wilson 2005).

In the literature, it is common to refer to sources unresolved or barely resolved on arcsecond scales as compact radio sources. In what follows, we will reserve the term compact for sources that have a significant fraction of their emission in mas-scale structure, or are unresolved with VLBI.

4.1.1 Ruling out stellar activity

To test the star formation scenario, we estimated the total star formation rates using multiwavelength data: radio, far-IR (FIR), optical and X-ray band. The FIR flux densities were extracted from *IRAS*. The H α flux densities and X-ray luminosities were taken from the literatures (Santra, Sanders & Fabian 2007; Sakai, Kennicutt & Moss 2012). Total star formation rates, as obtained using the relation from Bell (2003) for nuclear radio flux densities measured by the EVN, from Kennicutt (1998) for the *IRAS* FIR and the H α flux densities and from Ranalli, Comastri & Setti (2003) for the X-ray luminosities, are consistent with normal star-forming galaxies (see Table 2). We note that the star formation rates obtained from these different wavelengths do not all agree. In particular, the radio-derived star formation rates are higher in most cases. This is

another indication that the observed emission is likely not due to star formation only.

However, considering the very small physical area sampled by the EVN, the emission seen on mas scales is not consistent with star formation in the early-type galaxies there because the associated star formation rate per unit area is too high, $\sim 10^5$ – $10^7 M_{\odot} \text{ yr}^{-1} \text{ kpc}^{-2}$. This is comparable to some of the most extreme sites of star formation, for example, in the luminous IR galaxy NGC 4418, where star formation rates per unit area of $\sim 10^{4.5}$ – $10^{5.5} M_{\odot} \text{ yr}^{-1} \text{ kpc}^{-2}$ were measured with the EVN (Varenius et al. 2014). However, none of the other typical tracers, such as strong optical emission lines and blue broad-band colours, associated with intense star formation are observed in these objects (see also Section 4.1.2). We therefore conclude that the scenario of ongoing nuclear star formation can be ruled out.

Alternatively, the observed radio emission can be associated with young radio SNe or SNRs. The radio luminosity of our targets is comparable to that of the brightest radio SNe in nearby starburst galaxies with a radio luminosity of $\sim 10^{20}$ – $10^{22} \text{ W Hz}^{-1}$ (Weiler et al. 2002). A single or multiple radio SNe are required to explain the observed radio emission in our sources. However, young radio SNe do not seem to be responsible for the radio emission because no significant flux density changes were found in the WSRT observations for more than a decade.

4.1.2 Evidence for the LLAGN scenario

Flat or inverted spectrum radio cores in quasars are well known to be related to the optically thick base of synchrotron jets (Blandford & Königl 1979). Partially synchrotron self-absorbed jets are also ubiquitous in LLAGNs, but in that case, these are related to radiatively inefficient accretion in ‘hard-state’ black holes (e.g. Nagar et al. 2005). There are, however, alternative explanations for compact cores in LLAGNs, such as free–free emission from an X-ray-heated accretion disc wind and at a relatively lower brightness temperature (e.g. Bondi & Pérez-Torres 2010) or synchrotron emission absorbed by the surrounding thermal gas in the nuclear region (free–free absorption; Lal & Ho 2010; Varenius et al. 2014).

Low-resolution WSRT observations at 1.4 and 5 GHz by Sijbring (1993) show that three of our target sources (NGC 1270, NGC 1277 and NGC 1278) have flat spectra ($\alpha_{5/1.4} > -0.5$, where $S_{\nu} \propto \nu^{\alpha}$). These flat spectra, in addition to the EVN-observed high brightness temperatures in four of our target sources, support the LLAGN origin, regardless of the exact emission mechanism.

The best evidence for LLAGN activity, however, exists for the target source that has a very steep spectrum and by far the lowest EVN/WSRT flux density ratio: NGC 1272 was shown to have a

pair of bent, extended radio jets on arcsecond scales (McBride & McCourt 2014).

We inspected if there are signs of AGN activity in the X-ray (*Chandra* or *ROSAT*), optical [Sloan Digital Sky Survey (SDSS); Alam et al. 2015] and IR [*Wide-field Infrared Survey Explorer* (*WISE*); Wright et al. 2010]. To date, we believe that the strongest evidence for LLAGN activity in the five sources comes from the radio.

Among the five sources, NGC 1277, NGC 1278 and VZw 339 have been detected by *Chandra* in the energy range of 0.5–7 keV. Their absorption-corrected luminosities, listed in Table 2, are of the order of 10^{39} – 10^{40} erg s $^{-1}$ (Santra et al. 2007), which is typical for LLAGNs. The three sources have a power-law X-ray spectra with a photon index consisting of the expectation from LLAGNs instead of low-mass X-ray binaries (too steep; Santra et al. 2007).

We also computed the ratio between the radio and X-ray luminosities for these three sources. The ratio is about 3×10^{-4} for NGC 1277, 9×10^{-3} for NGC 1278 and 7×10^{-3} for VZw 339. They are at least one order higher than the Güdel–Benz relation, $L_R/L_X \sim 10^{-5}$, which is observed by Laor & Behar (2008) for the radio-quiet Palomar–Green quasar sample and where L_R is the radio luminosity at 5 GHz and L_X is the bolometric 0.2–20 keV X-ray luminosity. Together with their high brightness temperature and the absence of large variability, we are in favour of synchrotron emission from compact jets rather than free–free emission from accretion disc winds (e.g. Bondi & Pérez-Torres 2010) in the five LLAGNs.

Optical spectroscopy exists for VZw 339 and NGC 1270 (SDSS), and NGC 1277 (Trujillo et al. 2014). These spectra show no prominent emission lines such as [O III] λ 5007. Kauffmann et al. (2003) show that typical strong AGNs have [O III] luminosity $> 10^7 L_\odot$. The maximally allowed [O III] luminosity in NGC 1270, NGC 1277 and VZw 339 is about $10^4 L_\odot$. This indicates that a strong AGN is not present in these galaxies and is consistent with an LLAGN scenario.

All five targets were also observed as part of the H α survey by Sakai et al. (2012). NGC 1270, NGC 1272 and NGC 1277 were not detected in this survey, implying $L_{H\alpha} < 10^{40}$ erg s $^{-1}$. NGC 1278 and VZw 339 were found to have $L_{H\alpha} = 1 \times 10^{41}$ and 2×10^{40} erg s $^{-1}$, respectively. In both cases, the H α emission was observed to be extended on scales of 10–20 kpc, thus implying a non-nuclear origin.

On the basis of data from the *WISE* survey, we classified our targets using the mid-IR colour–colour diagram (Wright et al. 2010). All of them are located in the normal elliptical galaxy regime, as shown in Fig. 2, indicating that their emission is dominated by normal starlight. Note that the diagram is defined for luminous AGNs (Stern et al. 2012). In this context, the location of our target galaxies in this diagram is not surprising.

4.2 An overmassive black hole in NGC 1277?

The compact lenticular galaxy, NGC 1277, was found by van den Bosch et al. (2012) to have an overmassive black hole of $1.7 \times 10^{10} M_\odot$, which corresponds to 14 per cent of the total stellar mass of that galaxy. The fraction is much larger than the typical value (0.1 per cent) found in a normal massive galaxy (e.g. Häring & Rix 2004; Sani et al. 2011). van den Bosch et al. (2012) also noticed that this galaxy fails to follow the correlation between black hole mass and bulge luminosity. The later optical dynamical analysis by Yıldırım et al. (2015) achieved a consistent mass estimation, while recent optical studies by Graham et al. (2016) gave an

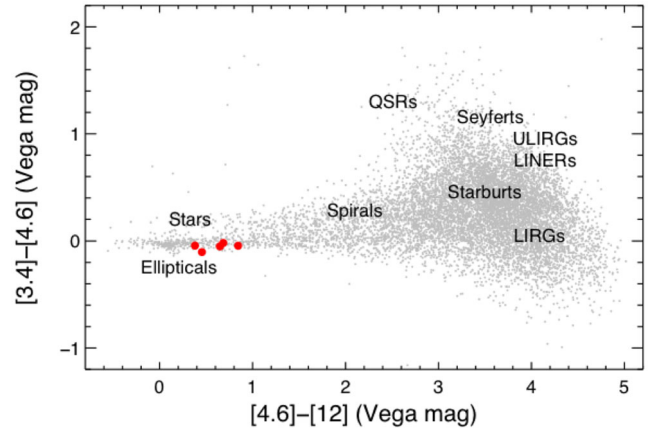


Figure 2. Colour–colour diagram based on the *WISE* IR survey (Wright et al. 2010, grey dots). All of our target sources (red filled circles) are located at the normal elliptical galaxy region, which suggests that they are inactive in the IR band.

order of magnitude smaller mass, $1.2 \times 10^9 M_\odot$. Walsh et al. (2016) found a black hole mass of $5 \times 10^9 M_\odot$ from NIR integral field unit observations, which is consistent with the result from dynamical realizations (Emsellem 2013). In addition, Scharwächter et al. (2016) estimated a black hole mass of $(5\text{--}17) \times 10^9 M_\odot$ from gas kinematics. Using only IR *K*-band luminosity, Santra et al. (2007) determined a much smaller black hole mass, $5.7 \times 10^8 M_\odot$.

The radio luminosity from partially synchrotron self-absorbed compact jets scales with the hard X-ray luminosity in the range of 2–10 keV and the mass from stellar mass to supermassive black holes in a predictable way, i.e. the Fundamental Plane (FP) relation (e.g. Merloni, Heinz & di Matteo 2003; Falcke, Körding & Markoff 2004). The FP relations, as regressed for the black hole mass by Miller-Jones et al. (2012), using a data set including sub-Eddington black holes collected by Plotkin et al. (2012), are the following:

$$\log(M_{\text{BH}}) = 1.638 \log(L_R) - 1.136 \log(L_X) - 6.863. \quad (2)$$

Currently, it is not well understood under what exact conditions and up to what extremes in luminosity and mass the FP relations may be applied. An important caveat in estimating the black hole mass directly from the measured radio and X-ray luminosities is that the various instruments probe very different linear scales because of the large differences in angular resolution, and the measurements are often not contemporaneous (Paragi et al. 2014). On the other hand, if the dominating source of emission is very compact, then both instruments probe the same source of emission.

Using the best resolution *Chandra* measurement (Santra et al. 2007) and our VLBI measurement, we find a black hole mass $M_{\text{BH}} \sim 4 \times 10^8 M_\odot$ for NGC 1277. This is in full agreement with the black hole mass estimated by Santra et al. (2007) from its IR luminosity. In the other two sources, NGC 1278 and VZw 339, with a known X-ray luminosity (Santra et al. 2007), black hole masses are found in the range of 10^9 – $10^{10} M_\odot$. This is about an order of magnitude larger than derived via their IR luminosity (Santra et al. 2007).

The uncertainty of the mass estimation using the FP relation is certainly not small, such as $1\sigma \sim 0.44$ dex by Miller-Jones et al. (2012). The FP relation is not a well-established tool for accurately measuring the mass of individual supermassive black holes; rather, it describes the hard-state black hole population in a statistical way. Furthermore, it is not clear whether all the X-ray emission comes

from the compact jet in NGC 1277. Thus, the large difference of 1.6 dex from the optical measurement by van den Bosch et al. (2012) is still acceptable. With the FP relation, we have no significant evidence for or against an ultramassive black hole residing in NGC 1277.

5 CONCLUSIONS

With very high resolution and sensitive EVN observations of the central 10-arcmin region of the Perseus cluster, we studied the origin of radio emission in five early-type galaxies, including NGC 1277, which hosts a promising ultramassive black hole. We detected radio emission compact on the parsec scale in all the five galaxies, although they have no sign of AGN activity in the optical and IR bands. Given that these VLBI-detected radio sources are quite compact and have a high brightness temperature and relatively stable flux density on a time-scale of years, we argue that they are linked to jet activities, powered by the central supermassive black holes in LLAGNs, instead of nuclear star formation. There is no significant evidence for or against classifying NGC 1277 as an overmassive black hole found from the FP relation. Our studies also show that VLBI is a powerful technique of searching for LLAGNs, especially in the case of normal galaxies.

ACKNOWLEDGEMENTS

We thank the referee for helpful comments and suggestions. We are grateful to Richard Plotkin for providing the data they used for regressing the FP relations and Ger de Bruyn for supplying the WSRT images. The EVN is a joint facility of independent European, African, Asian, and North American radio astronomy institutes. Scientific results from data presented in this publication are derived from the following EVN project code(s): EO009. The WSRT is operated by ASTRON (Netherlands Institute for Radio Astronomy) with support from the Netherlands Foundation for Scientific Research. The research leading to these results has received funding from the European Commission Seventh Framework Programme (FP/2007-2013) under grant agreement No. 283393 (RadioNet3). AIPS is produced and maintained by the National Radio Astronomy Observatory, a facility of the National Science Foundation operated under cooperative agreement by Associated Universities, Inc.

REFERENCES

Alam S. et al., 2015, *ApJS*, 219, 12
 Alexandroff R. et al., 2012, *MNRAS*, 423, 1325
 Bell E. F., 2003, *ApJ*, 586, 794
 Blandford R. D., Königl A., 1979, *ApJ*, 232, 34
 Bondi M., Pérez-Torres M.-A., 2010, *ApJ*, 714, L271
 Bonzini M., Padovani P., Mainieri V., Kellermann K. I., Miller N., Rosati P., Tozzi P., Vattakunnel S., 2013, *MNRAS*, 436, 3759
 Brown M. J. I., Jannuzi B. T., Floyd D. J. E., Mould J. R., 2011, *ApJ*, 731, L41
 Cao H.-M., Frey S., Gurvits L. I., Yang J., Hong X.-Y., Paragi Z., Deller A. T., Ivezić Z., 2014, *A&A*, 563, A111
 Condon J. J., Huang Z.-P., Yin Q. F., Thuan T. X., 1991, *ApJ*, 378, 65
 Croton D. J. et al., 2006, *MNRAS*, 365, 11
 Emsellem E., 2013, *MNRAS*, 433, 1862
 Fabian A. C., Sanders J. S., Haehnelt M., Rees M. J., Miller J. M., 2013, *MNRAS*, 431, L38
 Falcke H., Körding E., Markoff S., 2004, *A&A*, 414, 895
 Graham A. W., Durré M., Savorgnan G. A. D., Medling A. M., Batcheldor D., Scott N., Watson B., Marconi A., 2016, *ApJ*, 819, 43

Greisen E. W., 2003, in Heck A., ed., *Proc. IAU Symp.* 285, *Information Handling in Astronomy - Historical Vistas*. Kluwer, Dordrecht, p. 109
 Häring N., Rix H.-W., 2004, *ApJ*, 604, L89
 Ho L. C., 1999, *ApJ*, 510, 631
 Ho L. C., Filippenko A. V., Sargent W. L. W., 1997, *ApJS*, 112, 315
 Kauffmann G. et al., 2003, *MNRAS*, 346, 1055
 Keimpema A. et al., 2015, *Exp. Astron.*, 39, 259
 Kennicutt R. C., Jr, 1998, *ApJ*, 498, 541
 Kewley L. J., Heisler C. A., Dopita M. A., Sutherland R., Norris R. P., Reynolds J., Lumsden S., 2000, *ApJ*, 530, 704
 Khan F. M., Holley-Bockelmann K., Berczik P., 2015, *ApJ*, 798, 103
 Kimball A. E., Kellermann K. I., Condon J. J., Ivezić Z., Perley R. A., 2011, *ApJ*, 739, L29
 Lal D. V., Ho L. C., 2010, *AJ*, 139, 1089
 Laor A., Behar E., 2008, *MNRAS*, 390, 847
 McBride J., McCourt M., 2014, *MNRAS*, 442, 838
 Merloni A., Heinz S., di Matteo T., 2003, *MNRAS*, 345, 1057
 Miller-Jones J. C. A. et al., 2012, *MNRAS*, 421, 468
 Nagar N. M., Falcke H., Wilson A. S., Ho L. C., 2000, *ApJ*, 542, 186
 Nagar N. M., Falcke H., Wilson A. S., Ulvestad J. S., 2002, *A&A*, 392, 53
 Nagar N. M., Falcke H., Wilson A. S., 2005, *A&A*, 435, 521
 Nyland K. et al., 2016, *MNRAS*, 458, 2221
 Padovani P., Miller N., Kellermann K. I., Mainieri V., Rosati P., Tozzi P., 2011, *ApJ*, 740, 20
 Paragi Z., Frey S., Kaaret P., Cseh D., Overzier R., Kharb P., 2014, *ApJ*, 791, 2
 Pérez-Torres M. A., Romero-Cañizales C., Alberdi A., Polatidis A., 2009, *A&A*, 507, L17
 Plotkin R. M., Markoff S., Kelly B. C., Körding E., Anderson S. F., 2012, *MNRAS*, 419, 267
 Ranalli P., Comastri A., Setti G., 2003, *A&A*, 399, 39
 Sadler E. M., Jenkins C. R., Kotanyi C. G., 1989, *MNRAS*, 240, 591
 Sakai S., Kennicutt R. C., Jr, Moss C., 2012, *ApJS*, 199, 36
 Sani E., Marconi A., Hunt L. K., Risaliti G., 2011, *MNRAS*, 413, 1479
 Santra S., Sanders J. S., Fabian A. C., 2007, *MNRAS*, 382, 895
 Scharwächter J., Combes F., Salomé P., Sun M., Krips M., 2016, *MNRAS*, 457, 4272
 Shepherd M. C., Pearson T. J., Taylor G. B., 1994, *BAAS*, 26, 987
 Shields G. A., Bonning E. W., 2013, *ApJ*, 772, L5
 Sijbring D., 1993, PhD thesis, Rijksuniversiteit Groningen
 Slee O. B., Sadler E. M., Reynolds J. E., Ekers R. D., 1994, *MNRAS*, 269, 928
 Somerville R. S., Hopkins P. F., Cox T. J., Robertson B. E., Hernquist L., 2008, *MNRAS*, 391, 481
 Stern D. et al., 2012, *ApJ*, 753, 30
 Trujillo I., Ferré-Mateu A., Balcells M., Vazdekis A., Sánchez-Blázquez P., 2014, *ApJ*, L20
 van den Bosch R. C. E., Gebhardt K., Gültekin K., van de Ven G., van der Wel Arjen., Walsh J. L., 2012, *Nature*, 491, 729
 Varenus E., Conway J. E., Martí-Vidal I., Aalto S., Beswick R., Costagliola F., Klöckner H.-R., 2014, *A&A*, 566, A15
 Walsh J. L., van den Bosch R. C. E., Gebhardt K., Yıldırım A., Richstone D. O., Gültekin K., Husemann B., 2016, *ApJ*, 817, 2
 Weiler K. W., Panagia N., Montes M. J., Sramek R. A., 2002, *ARA&A*, 40, 387
 Wright E. L. et al., 2010, *AJ*, 140, 1868
 Wrobel J. M., Heeschen D. S., 1991, *AJ*, 101, 148
 Yıldırım A., van den Bosch R. C. E., van de Ven G., Husemann B., Lyubenova M., Walsh J. L., Gebhardt K., Gültekin K., 2015, *MNRAS*, 452, 1792

This paper has been typeset from a $\text{\TeX}/\text{\LaTeX}$ file prepared by the author.