



CHALMERS

Chalmers Publication Library

Contributions of point defects, chemical disorder, and thermal vibrations to electronic properties of Cd_{1-x}Zn_xTe alloys

This document has been downloaded from Chalmers Publication Library (CPL). It is the author's version of a work that was accepted for publication in:

Physical Review B (ISSN: 1098-0121)

Citation for the published paper:

Aberg, D. ; Erhart, P. ; Lordi, V. (2013) "Contributions of point defects, chemical disorder, and thermal vibrations to electronic properties of Cd_{1-x}Zn_xTe alloys". Physical Review B, vol. 88(4), pp. 045201.

<http://dx.doi.org/10.1103/PhysRevB.88.045201>

Downloaded from: <http://publications.lib.chalmers.se/publication/180960>

Notice: Changes introduced as a result of publishing processes such as copy-editing and formatting may not be reflected in this document. For a definitive version of this work, please refer to the published source. Please note that access to the published version might require a subscription.

Chalmers Publication Library (CPL) offers the possibility of retrieving research publications produced at Chalmers University of Technology. It covers all types of publications: articles, dissertations, licentiate theses, masters theses, conference papers, reports etc. Since 2006 it is the official tool for Chalmers official publication statistics. To ensure that Chalmers research results are disseminated as widely as possible, an Open Access Policy has been adopted. The CPL service is administrated and maintained by Chalmers Library.

(article starts on next page)

Contributions of point defects, chemical disorder, and thermal vibrations to electronic properties of $\text{Cd}_{1-x}\text{Zn}_x\text{Te}$ alloys

Daniel Åberg,^{1,*} Paul Erhart,^{1,2} and Vincenzo Lordi¹

¹*Physical and Life Science Directorate, Lawrence Livermore National Laboratory, California 94550, USA*

²*Chalmers University of Technology, Department of Applied Physics, S-412 96 Gothenburg, Sweden*

(Received 11 October 2012; revised manuscript received 24 June 2013; published 10 July 2013)

We present a first-principles study based on density functional theory of thermodynamic and electronic properties of the most important intrinsic defects in the semiconductor alloy $\text{Cd}_{1-x}\text{Zn}_x\text{Te}$ with $x < 0.13$. The alloy is represented by a set of supercells with disorder on the Cd/Zn sublattice. Defect formation energies as well as electronic and optical transition levels are analyzed as a function of composition. We show that defect formation energies increase with Zn content with the exception of the neutral Te vacancy. This behavior is qualitatively similar to but quantitatively rather different from the effect of volumetric strain on defect properties in pure CdTe. Finally, the relative carrier scattering strengths of point defects, alloy disorder, and phonons are obtained. It is demonstrated that for realistic defect concentrations, carrier mobilities are limited by phonon scattering for temperatures above approximately 150 K.

DOI: [10.1103/PhysRevB.88.045201](https://doi.org/10.1103/PhysRevB.88.045201)

PACS number(s): 61.72.J-, 72.80.Ng, 72.10.Fk, 71.55.Gs

I. INTRODUCTION

Cadmium telluride (CdTe) has found applications in a wide range of areas including but not limited to solar cells,¹ radiation detectors,² and electro-optical modulators.³ CdTe is a prime candidate material for room-temperature radiation detectors thanks to a number of reasons: (1) Its band gap lies within the range that maximizes the signal-to-noise ratio by balancing the numbers of photogenerated carriers vs thermally generated carriers. (2) High-purity CdTe crystals exhibit a long carrier drift length, characterized by the product of carrier mobility μ and carrier trapping lifetime τ .⁴⁻⁷ A large $\mu\tau$ value ensures efficient charge collection and a linear response to the energy of incident radiation. (3) Finally, these samples possess also high resistivity ρ , which is required to keep leakage currents at a minimum.

Further improvements can be accomplished by addition of Zn to obtain $\text{Cd}_{1-x}\text{Zn}_x\text{Te}$ (CZT) alloys. The band gap gradually increases with Zn concentration from 1.5 to approximately 1.6 eV at $x \approx 0.1$, which leads to a further reduction of thermal noise and raises the resistivity up to $8 \times 10^{10} \Omega \text{ cm}$.^{4,7,8}

Empirically Zn alloying has been found to have additional benefits such as oxygen gettering, increased hardness, and reduced degradation of detector performance over time from buildup of internal fields under high radiation flux (“polarization” effect).⁴ These features have allowed the fabrication of CZT γ detectors with excellent energy resolution better than 1% at 662 keV.^{9,10} The large-scale deployment of CZT detectors is, however, hampered by high material costs. This results from the difficulty of growing large uniform single crystals, which requires cutting the ingot into individual crystallites, followed by testing and selection (“crystal harvesting”). A variety of defects—from point defects to dislocations and secondary phases—limit the performance of the individual crystals. Understanding and learning to control the different contributions is therefore key to improving the manufacturing yield and driving down cost.

Defects affect resistivity, charge carrier mobilities, and carrier lifetimes in different ways. The resistivity for example is largely determined by the concentrations of charged defects,

which are coupled by the charge neutrality condition and can be obtained from the defect formation energies.^{11,12} Charge carrier mobilities in turn are limited by scattering at lattice perturbations and are therefore sensitive not only to point defects and dislocations but also to thermal vibrations. Finally, lifetimes are shortened by carrier trapping, which occurs preferentially at defects that induce deep levels in the band gap leading to carrier recombination via the Shockley-Read-Hall mechanism.¹³ In CdTe and CZT, generally lifetime-limiting defects remain the biggest challenge to maximizing device performance.

These effects are modified in the case of alloys. The chemical disorder introduces a distribution of defect formation energies and electronic transition levels, and provides additional scattering channels. In this work we compute the formation energies and transition levels of native defects in CZT and study their dependence on alloy composition as well as the possible appearance of new defect levels in the gap. Furthermore, we determine the relative importance of point defects, phonons, and alloying for carrier mobilities. This assessment is important for developing material optimization strategies. For example, intentional doping and annealing can be used to modify the defect populations with little impact on phonon properties.

There are approaches at different levels of sophistication for modeling the thermodynamic properties of an alloy including for example the virtual crystal approximation (VCA),^{14,15} the coherent potential approximation,¹⁶ special quasirandom structures,¹⁷ and alloy cluster expansions.¹⁸ Here, in order to obtain a simple unified approach that allows the study of both the distribution of defect-related thermodynamic quantities and scattering rates, we model the alloy disorder by using a set of supercells with Zn atoms randomly distributed over Cd sites. This approach has been applied successfully by Carvalho *et al.* to study formation energies of cation-site intrinsic defects in CZT.¹⁹ In the following we employ density functional theory to demonstrate from first principles that (i) point defect formation energies increase or stay approximately constant as a function of Zn concentration, (ii) optical transition levels are virtually unchanged upon alloying, and (iii) mobilities are limited by

phonon scattering at ambient conditions. The study focuses on Zn concentrations up to 15%, which is the most relevant range for applications in radiation detection.

II. METHODOLOGY

A. Point defect thermodynamics

The temperature dependence of the equilibrium defect concentration obeys the following relation:²⁰

$$c = c_0 \exp\left(-\frac{\Delta G_f}{k_B T}\right), \quad (1)$$

where c_0 denotes the concentration of possible defect sites and ΔG_f is the Gibbs free energy of defect formation, which we approximate by the formation energy ΔE_f , assuming that the vibrational entropy and pressure-volume term are small.²¹ The formation energy for a defect in charge state q is given by²²⁻²⁴

$$\Delta E_f = E_{\text{def}} - E_{\text{ideal}} - \sum_i \Delta n_i \mu_i + q(E_{\text{VBM}} + \mu_e), \quad (2)$$

where E_{def} and E_{ideal} are the energies of the system with and without the defect, respectively, Δn_i denotes the number of atoms of type i and chemical potential μ_i added to the system, and μ_e is the electron chemical potential measured with respect to the valence band maximum (VBM), E_{VBM} .

Neglecting entropic contributions, the heat of formation for the CZT alloy is given by

$$\Delta H_f(\text{CZT}, x) = (1-x)\mu_{\text{Cd}} + x\mu_{\text{Zn}} + \mu_{\text{Te}} - (1-x)\mu_{\text{Cd}}^{\text{bulk}} - x\mu_{\text{Zn}}^{\text{bulk}} - \mu_{\text{Te}}^{\text{bulk}}. \quad (3)$$

Defining $\mu_i = \mu_i^{\text{bulk}} + \Delta\mu_i$, where μ_i^{bulk} is the chemical potential of component i in its reference state, we obtain the relation

$$\Delta H_f(\text{CZT}, x) = (1-x)\Delta\mu_{\text{Cd}} + x\Delta\mu_{\text{Zn}} + \Delta\mu_{\text{Te}}. \quad (4)$$

Since $\Delta\mu_i$ has to be nonpositive to avoid forming bulk material i , the range of the chemical potentials is constrained by

$$0 \geq \Delta\mu_i \geq \Delta H_f(\text{CZT}, x). \quad (5)$$

We then define the cation-rich limit as $(1-x)\Delta\mu_{\text{Cd}} + x\Delta\mu_{\text{Zn}} = 0$ and the Te-rich limit by $\Delta\mu_{\text{Te}} = 0$ (see Ref. 25). In particular, in the Te-rich limit we make the approximation $\Delta\mu_{\text{Cd}} = \Delta\mu_{\text{Zn}}$. Given the formation energies at $\mu_e = 0$ for two different charge states, q_1 and q_2 , we compute the equilibrium electronic transition level as

$$E_{\text{tr}}^{\text{el}}(q_1 \rightarrow q_2) = \frac{\Delta E_f(q_2) - \Delta E_f(q_1)}{q_1 - q_2}. \quad (6)$$

B. Theoretical carrier mobilities

In a quasiclassical picture, the motion of free carriers subjected to a weak electric field is governed by the Boltzmann transport equation.²⁶ In particular, the electrical conductivity and carrier mobilities are related to scattering processes at the microscopic scale.²⁷ In an alloy system, three major carrier scattering channels are active, namely, those involving phonons, the inherent randomness of the alloy itself, and defects.^{14,15,27-29} The relative importance of these scattering

channels can be assessed from first principles using Fermi's Golden Rule:

$$R_{i \rightarrow f} = \frac{2\pi}{\hbar} |\langle f | \Delta V | i \rangle|^2 \delta(\varepsilon_f - \varepsilon_i). \quad (7)$$

Here i and f denote initial and final states, respectively, and ΔV is the relevant scattering potential. To compare the relative importance of each scattering channel, each contribution should be treated at the same level of approximation. Although highly accurate first-principles approaches have been developed to address each channel separately,²⁸⁻³⁰ the computational cost associated with the combinatorial explosion of point defects in an alloy currently hinders further exploration. Therefore, more cost-effective approaches are desirable. In the following we present an approximate, but comprehensive, approach that forms the basis for our analysis.

Defect scattering. For point defect scattering, we begin with Fermi's Golden Rule as shown in Eq. (7). The orthogonality of the initial and final states ensures that only gradients of ΔV contribute to the integral. Thus, we have earlier defined a simpler, but cruder, measure termed the *relative scattering strength* M^2 by³⁰

$$M = \int d\mathbf{r} |\nabla_{\mathbf{r}}(\Delta V)|. \quad (8)$$

Note that this quantity is independent of initial and final state wave functions. Despite its simple form, we have shown that M^2 from Eq. (8) is approximately proportional to the more computationally expensive Brillouin-zone average over all scattering rates given by Eq. (7).³⁰

Alloy scattering. For scattering from the alloy randomness, we follow a similar procedure as that for defect scattering. For a given Zn concentration x we calculate the relative scattering strength using a scattering potential ΔV given by

$$\Delta V_{\text{alloy}} = V_{\text{alloy}} - (1-x)V_{\text{CdTe}} - xV_{\text{ZnTe}}, \quad (9)$$

where all terms are computed for the same supercell size and lattice constant. We then average over an ensemble of random alloy configurations for each x . This choice of scattering potential is similar to the VCA approach of Joyce, Murphy-Armando, and Fahy.^{28,29} We also note that substitution of $(1-x)V_{\text{CdTe}} + xV_{\text{ZnTe}}$ by the potential resulting from a VCA calculation at the same concentration did not impact the results.

Phonon scattering. Anticipating that the introduction of a small concentration of Zn does not greatly affect the vibrational frequencies and phonon polarization vectors, here we only consider phonon scattering in pure CdTe and assume the results to transfer to the CZT alloy. Again following the perturbative approach as above, we compute the relative scattering strength of a thermal population of phonon modes by taking the difference between a thermally excited atomic configuration and the ideal zero temperature configuration. We perform the ensemble average over phonon modes by averaging over different atomic configurations representing thermally populated phonons. As shown in the Appendix this approximation slightly overestimates the scattering strengths by a maximum value of 1.62 [see Eq. (A3)]. The configuration space was sampled in two different ways to separate harmonic and anharmonic contributions. In the first approach, cells were generated by superimposing harmonic phonons modes with

random phases and amplitudes according to classical statistics, setting the mean-square amplitude of mode j according to³¹

$$\langle |Q_j|^2 \rangle = \frac{kT}{\omega_j^2}.$$

In the second approach, anharmonicity was explicitly accounted for by sampling decorrelated configurations from *ab initio* molecular dynamics trajectories.

C. Computational details

Density functional theory (DFT) calculations were carried out in the local density approximation (LDA) using the Vienna *ab initio* simulation package (VASP)³² and ultrasoft pseudopotentials.³³ We employed supercells of 216 atoms sampled in reciprocal space with $2 \times 2 \times 2$ k -point grids generated using the Monkhorst-Pack scheme.³⁴ The plane wave energy cutoff was set to 277 eV and Gaussian smearing with a width of 0.1 eV was used to determine the occupation numbers. For a given Zn concentration we created 20 replicas of the original ideal or defective cell and randomly substituted Zn for Cd. The cells were subsequently relaxed until ionic forces were less than 30 meV/Å. The lattice parameters were taken from VCA calculations.³⁵ A homogeneous background charge was added for calculations including a charged defect to ensure charge neutrality of the entire cell. The monopole-monopole correction of Makov and Payne was applied to correct for the spurious interaction of charged defects.³⁶ No band gap or potential alignment corrections were performed.

We note that equilibrium transition levels $E_{\text{tr}}^{\text{el}}$ are distinct from optical transition levels $E_{\text{tr}}^{\text{opt}}$ as the former determine the equilibrium electron chemical potential at which a change in the charge state occurs, whereas the latter ones correspond to optical (“vertical”) transitions without the involvement of lattice relaxations. Neglecting excitonic or multiplet effects we can in principle calculate optical transition levels from total energy differences of a defect in charge state q and $q \pm 1$ in the same geometry. Thus, we need an additional separate calculation of the total energy for each relaxed defect geometry. Due to the very large number of defect configurations we here instead make the additional approximation that $E_{\text{tr}}^{\text{opt}}$ may be calculated by Kohn-Sham eigenvalue differences for charge state q . We note that this corresponds to the neglect of changes in the DFT double counting term (see Ref. 21).

In this work, we focus on the most important defects as determined by earlier studies.^{37,38} These are the Cd and Te vacancies, Te on Cd antisite (in local T_d and C_{3v} symmetries), Te-tetrahedrally coordinated Cd interstitials, and the most important Te-Te and Cd-Te dumbbell split interstitials. We refer to Ref. 38 for details of the respective geometries.

III. RESULTS AND DISCUSSIONS

A. Ideal CZT alloy

The adequacy of the supercell approach, outlined in Sec. II C, to mimic the behavior of the ideal alloy was assessed by a study of its thermodynamic properties below the melting temperature. First, the zero Kelvin enthalpy of mixing was obtained by fitting a second-order polynomial to the lowest energy configurations for Zn concentrations up to 13%, as

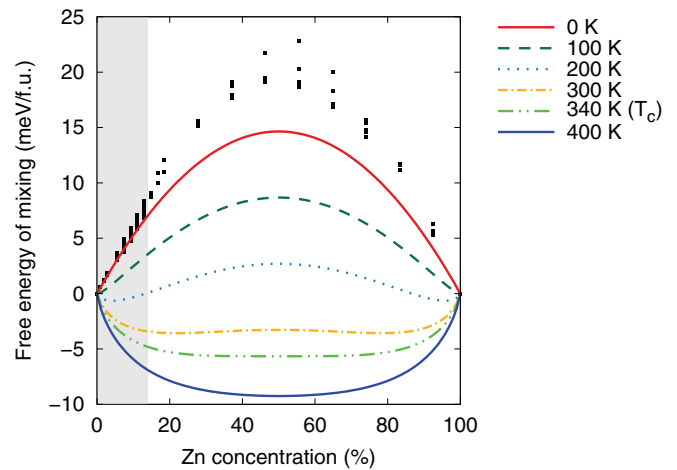


FIG. 1. (Color online) Free energy of mixing of CZT as a function of Zn concentration and temperature. Symbols denote the enthalpies of mixing calculated using the total energies from the supercell approach. The red solid line is the result of a quadratic polynomial fit to the lowest energy configurations within the gray area ($\leq 13\%$). The remaining lines represent the free energy of mixing up to 400 K, as generated by adding the entropy contribution for a random solution.

displayed in Fig. 1. This corresponds to the enthalpy of mixing for pairwise interaction energies and a random distribution of atoms on the sublattices.³⁹ Thus, the system is completely immiscible at absolute zero. The critical temperature (T_c) was then approximated by assuming a completely random solution, yielding $T_c = 340$ K. In contrast, the VCA (results not shown) erroneously predicts a miscible solution at all temperatures.

The literature is unfortunately riddled with disparate estimates of T_c . Model calculations based on fits to experimental data using the CALPHAD approach⁴⁰ give 701 K, while cluster expansion calculations based on first-principles energies⁴¹ predict 605 K. Experimental estimates also vary, with one careful study reporting $T_c = 435$ K from a fit to extended x-ray absorption fine-structure characterization of phase separating alloys, but also $T_c = 340$ K by extracting parameters from the liquid-solid phase diagram.⁴² Earlier experimental studies had reported and accepted higher values for T_c , but it is pointed out that slow diffusion at low temperatures makes the determination difficult by observation of phase separation, which might grossly overestimate the binodal stability temperature. The value of 701 K cited above relied on a fit to sparse experimental data at low temperatures which likely were out of equilibrium.

In addition, we calculated the variation in band gap as a function of Zn concentration and compared it to experimental data, as shown in Fig. 2. The randomized supercell approach accurately reproduces the experimental trend, while the VCA exhibits incorrect bowing. In fact, even the sign of the bowing is incorrect with VCA over almost the entire range.

B. Formation energies and electronic transition levels

We display in Fig. 3 the formation energies (lines) and electronic transition energies (symbols) as a function of the electron chemical potential under Te-rich conditions for the specific case of $x = 0.08$. To summarize, the most dominant defects for $\mu_e \approx E_g/2$ are the double acceptor V_{Cd}^{2-} , double

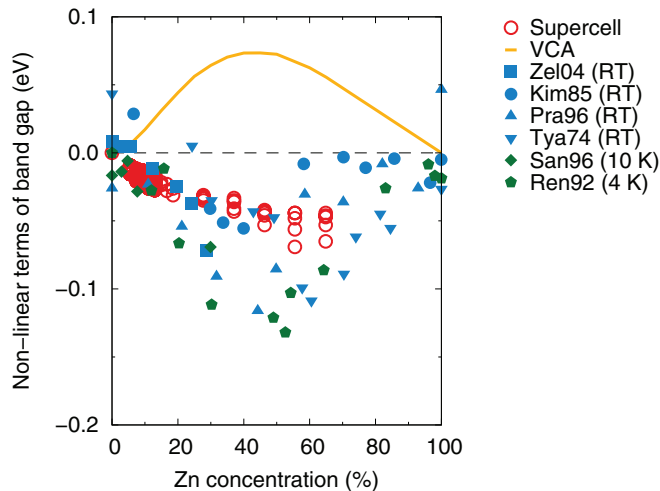


FIG. 2. (Color online) Deviation from linear dependence of band gap as a function of Zn concentration. The solid yellow line and the red open circles denote the VCA and supercell results, respectively. The calculated values are shifted with a linear function to coincide with the room-temperature experimental band gap of CdTe and ZnTe at $x = 0$ and $x = 1$, respectively. Experimental values recorded at room temperature are shown with blue symbols, see Refs. 43–47. Data recorded below 10 K are shown with green symbols, see Refs. 48 and 49. The latter have been shifted by a constant to coincide with the room-temperature data.

donor $\text{Cd}_{i,\text{Te}}^{2+}$, and the electrically neutral Te_{Cd}^0 . In fact, the relative ordering in terms of formation energies and electronic transition levels for the different defects is unchanged with respect to CdTe.³⁸ However, in the case of CZT a few defects, most notably V_{Te} and $\text{Cd}_{i,\text{Te}}$, display a strong variation of formation energies and electronic transition levels between different alloy configurations (supercells). This effect is highlighted in Fig. 4, where ΔE_f and $E_{\text{tr}}^{\text{el}}$ are plotted separately for each configuration as a function of Zn concentration.

In principle, strong variations in the formation energies are a tell-tale sign of defects being sensitive to local structure variations. The impact of Zn composition and alloy disorder on formation energies will now be discussed the cases of V_{Te} and $\text{Cd}_{i,\text{Te}}$.

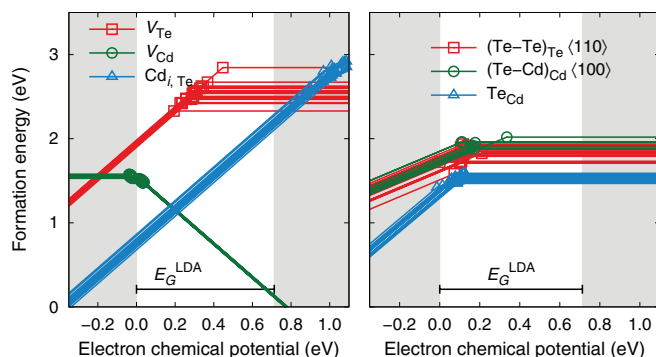


FIG. 3. (Color online) Dependence of the formation energies on the electron chemical potential under Te-rich conditions for the most important intrinsic defects in $\text{Cd}_{1-x}\text{Zn}_x\text{Te}$ ($x = 0.08$). Each line corresponds to a separate random Zn configuration. The electronic (charge state) transition energies are denoted by the symbols.

1. Tellurium vacancy

In contrast to the anion vacancies in III-V semiconductors,^{21,50–52} the V_{Te} defect is not subject to a Jahn-Teller distortion.⁵³ Rather, in an unrelaxed supercell containing a single neutral Te vacancy, the a_1 defect level resides inside the band gap and is fully occupied, whereas the triply degenerate t_2 level is completely empty. Thus no energy can be gained by breaking the T_d symmetry. When allowing the ions to relax, the neighboring Cd ions move symmetrically inward by a distance of 2.0 Å toward the vacant site for $q = 0$ and outward by 3.5 Å for $q = 2$. The inward relaxation for $q = 0$ causes the a_1 defect level to lower its energy and hybridize with valence band states. In CZT the V_{Te}^{2+} geometry is virtually unchanged with respect to the defective CZT, whereas the geometry of the $q = 0$ state displays drastic asymmetric variations. In particular, the nearest neighbor (NN) Zn atoms tend to not relax inward as the Cd NNs do. We, however, emphasize that in some configurations Cd NNs also display this behavior. As shown Fig. 5(a), this manifests itself as two distinct average $V_{\text{Te}}\text{-NN}$ distances ($d_<$ and $d_>$). Furthermore, the asymmetric configurations ($d_>$), which in most cases involve a Zn NN, tend to have lower formation energies. Note that this effect is not observed for charge state $q = 2$. However, as the overlap of the formation energies for the two distinct groupings is appreciable, the large variation cannot be correlated to the number of NN Zn neighbors or local geometry alone.

Figure 5(b) displays the variation of formation energies with respect to mean-square displacement $\sum_i \Delta r_i$ of all atoms. It can be seen that the formation energies decrease with increasing amount of relaxation. The reduction is roughly linear for the geometries that maintain the *local* T_d symmetry. Thus we conclude that the variation in formation energies is due to atomic relaxation outside the nearest-neighbor shell. This is consistent with the earlier observation that the occupied a_1 defect state hybridizes with extended valence band states.

2. Cadmium interstitial

The analysis of the $\text{Cd}_{i,\text{Te}}$ geometries is more straightforward. In CdTe, the $\text{Cd}_{i,\text{Te}}^{2+}$ is tetrahedrally coordinated to four Te, each at a distance of 2.85 Å. By random substitution of Cd by Zn, the formation energies spread to a range of about 0.35 eV. In Fig. 6 we show the formation energies as a function of average NN distance and number of next-NN Zn atoms. One finds the average formation energy to generally increase with Zn concentration (see Fig. 4). Furthermore, the large variation of formation energies is found to be strongly dependent on the number of next-NN Zn atoms which also correlates with the average NN distance.

3. Alloying vs strain

The general trends for all defects studied here are clear across the concentration range of interest: the formation energies increase or stay constant as a function of Zn concentration for all defects and charge states, except V_{Cd} . Carvalho *et al.* examined the correlation between point defect formation energies for cation-site defects in CZT and volumetrically strained CdTe and concluded that in the range of $x < 0.5$,

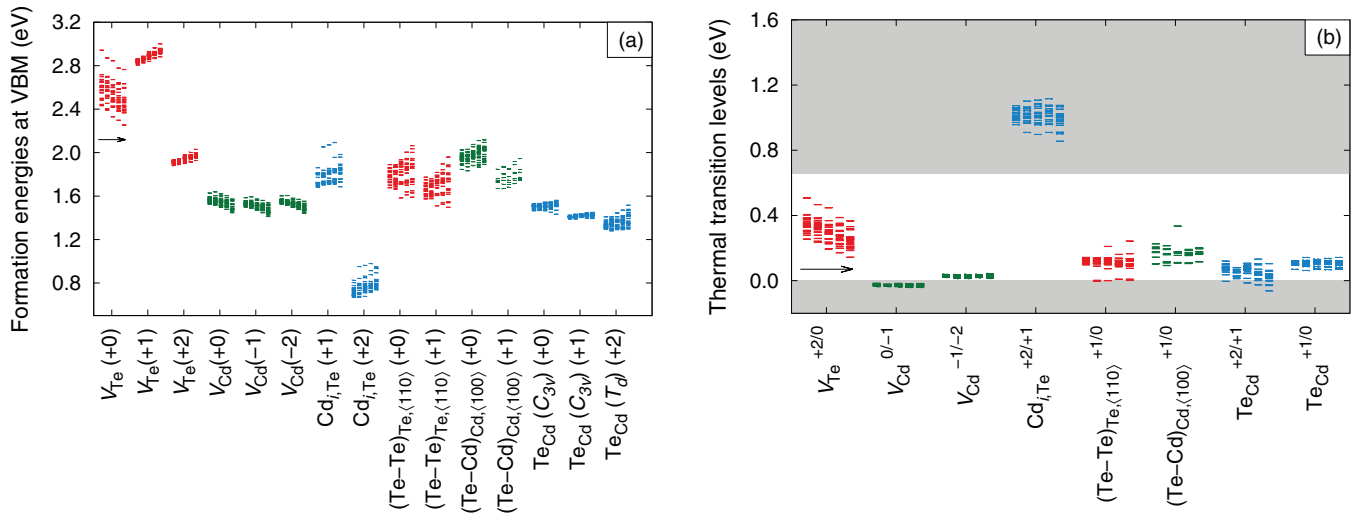


FIG. 4. (Color online) (a) For each defect and charge state, the formation energy at the VBM ($\mu_e = 0$) for Te-rich conditions is plotted for the set of configurations for five different concentrations ranging from 5.5 to 13.0% (left to right, indicated by the arrow). (b) For each defect, the electronic transition levels are plotted for the set of configurations for five different concentrations ranging from 5.5 to 13.0% (left to right, indicated by the arrow).

the volume change induced by alloying is the dominant factor in the change of formation energies.¹⁹ Thus, they posit that accurate defect formation energies for the alloy may be predicted by performing calculations with the pure binary compound using the lattice constant of the alloy. To the benefit of this conclusion, we show in Fig. 7 that usually point defect formation energies in CZT and strained CdTe indeed exhibit some general overall correlation. However, the absolute values of formation energies as well as their variation with volume are

quantitatively rather different. In fact, the only defect showing reasonably good quantitative agreement is the Cd interstitial. Hence we conclude that formation energies calculated using the strained binary compound in general have small, if any, predictive power.

C. Optical transition levels

The optical transition levels for defects with levels inside or near the band gap have been extracted from the Kohn-Sham band structure of the defect cell and are displayed in Fig. 8 as a function of Zn concentration. The black solid lines indicate optical transitions in pure CdTe, and each colored line represents a defect state in a particular randomized supercell. In general, the average for each group of levels coincides roughly with the CdTe result. The alloy configurations show various spreads for each defect, arising for the same reasons

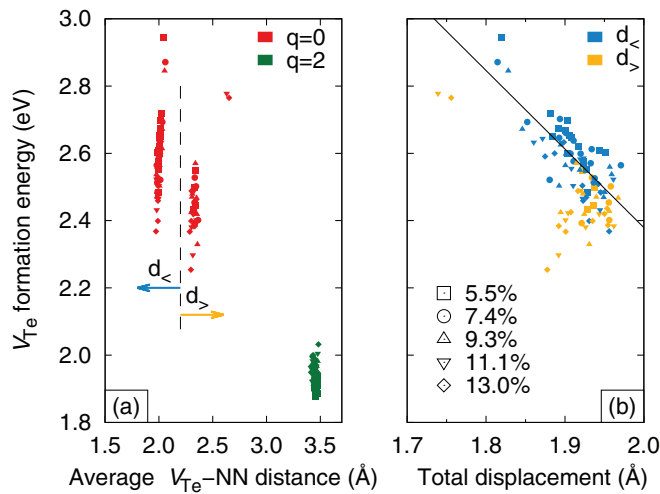


FIG. 5. (Color online) (a) V_{Te} formation energy at the VBM ($\mu_e = 0$) as a function of average V_{Te} -nearest-neighbor distance. The Zn concentration is indicated by the different symbols. Red and green symbols correspond to charge states $q = 0$ and $q = 2$, respectively. Dashed line indicates separation of configurations with small ($d_<$) and large ($d_>$) V_{Te} -NN distances. (b) V_{Te} formation energy for $q = 0$ at the VBM ($\mu_e = 0$) as a function of displacements of all atoms with respect to the defect-free system. Again, symbols denote Zn concentration and colors indicate small ($d_<$) and large ($d_>$) V_{Te} -NN distances. The line is drawn to guide the eye.

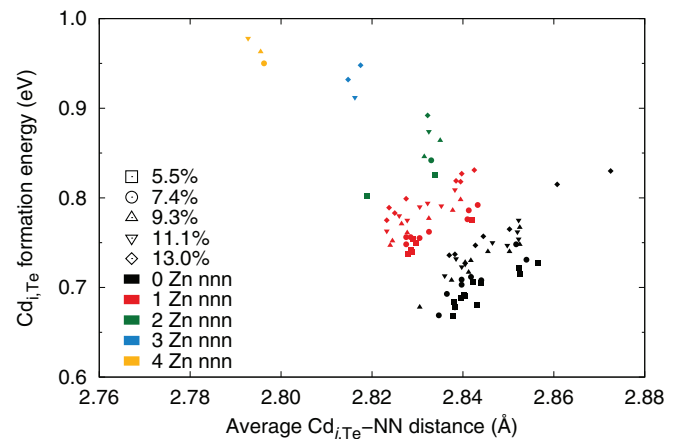


FIG. 6. (Color online) Formation energy at the VBM ($\mu_e = 0$) as a function of average $Cd_i Te$ -nearest-neighbor distance. The symbols and colors indicate the Zn concentration and the number of Zn atoms in the next-nearest-neighbor shell.

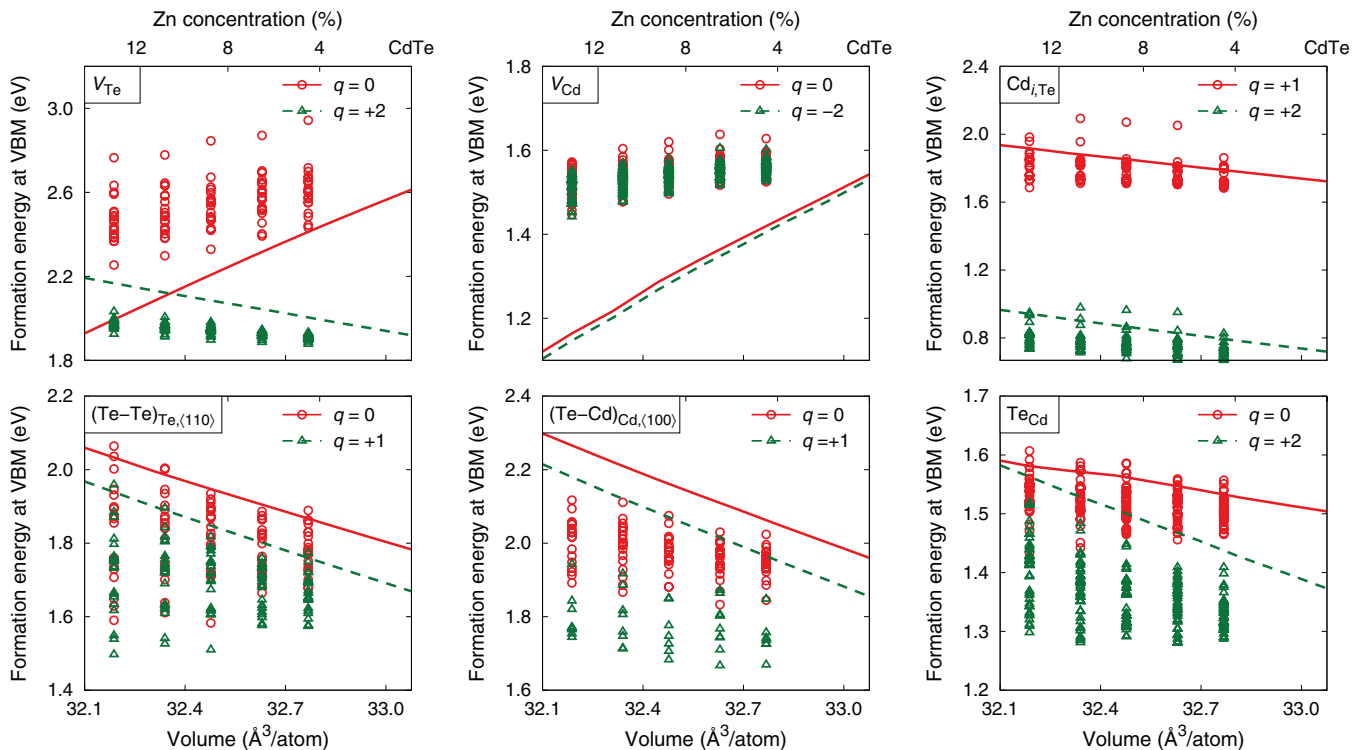


FIG. 7. (Color online) Formation energies at the VBM ($\mu_e = 0$) under Te-rich conditions for the six most important intrinsic defects in CdTe as a function of compressive strain (lines) and in CZT as a function of volume (symbols).

as the variations in the formation energies described in Sec. III B. Furthermore, with a few exceptions (notably, Te_{Cd}^0 and $(\text{Te}-\text{Te})_{\text{Te}, <110>}^0$), the position and spread of the transitions are fairly insensitive to Zn concentration. Since no new levels are introduced inside the gap (nor do any existing levels move

appreciably deeper into the gap) from Zn alloying, we conclude that the effect of defect-mediated electron-hole recombinations via the Shockley-Read-Hall mechanism¹³ does not increase upon Zn alloying.

D. Defect, alloy, and phonon scattering

The relative carrier scattering strengths for the intrinsic defects as a function of Zn concentration are shown in Fig. 9. These scattering strengths correspond to one defect in a 216-atom cell and hence correspond to a defect concentration on the order of 10^{20} cm^{-3} . Compared to pure CdTe, the scattering strengths are virtually unchanged and exhibit little scatter with alloy configuration. A large lattice distortion with respect to the ideal cell gives rise to scattering potentials with large gradients and hence strong scattering. In accordance, the split interstitials and Te vacancies are by far the strongest carrier scattering centers. It is also quite natural to expect that scattering strengths of defects in pure CdTe would serve as a lower bound since the alloy disorder could introduce more complex relaxed geometries as well as stronger scattering potentials. Indeed, this is in fact observed for all defects in the present study with the exception of the neutral Te vacancy. We recall, however, that the nearest neighbors of V_{Te}^0 are subject to a large inward relaxation, unless it is a Zn atom (see Sec. III B). Hence, the defect structure for the alloy is actually *less* distorted with respect to the ideal case when a Zn atom sits next to the vacancy, explaining this apparent anomaly.

The last column in Fig. 9 compares the relative scattering of randomized 216-atom cells with respect to the ideal structure at the same lattice constant, representing the effect of alloying.

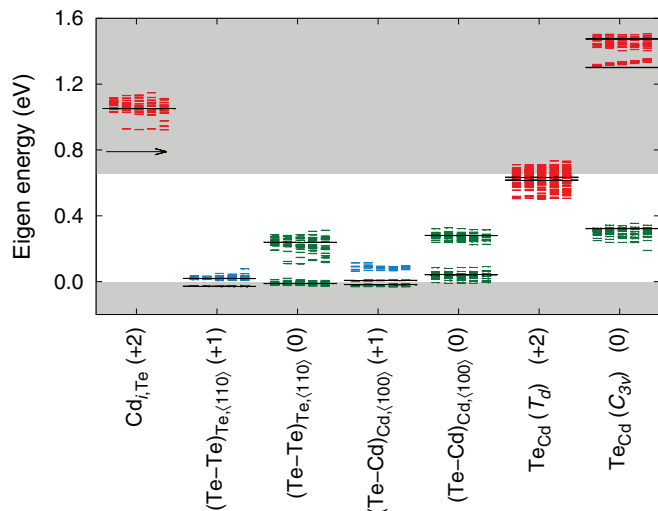


FIG. 8. (Color online) Kohn-Sham defect levels for the most important intrinsic defects in CZT. For each defect, levels of all the randomized cells are shown for five different concentrations ranging from 5.5 to 13.0% (left to right, indicated by the arrow). Red, blue, and green line colors denote an empty, half-filled, and fully occupied level, respectively. The solid black lines show the level positions in the pure CdTe case.

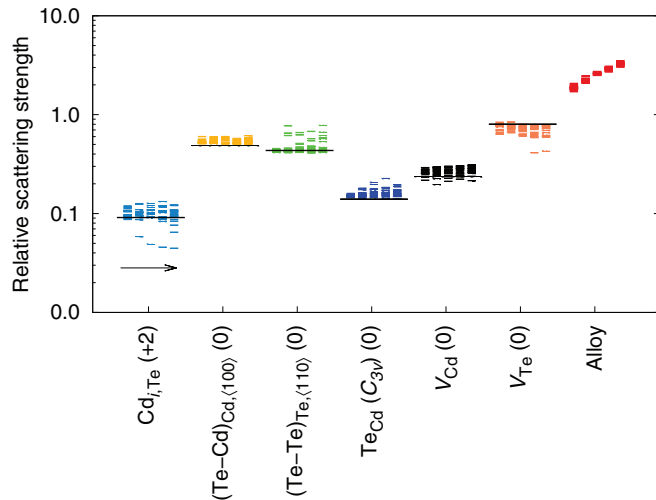


FIG. 9. (Color online) Relative scattering strengths [see Eq. (8)] for the most important intrinsic defects in CZT. For each defect, scattering strengths are shown for five different concentrations ranging from 5.5 to 13.0% (left to right, indicated by the arrow). The solid black lines show the relative scattering strengths for the pure CdTe case. The last column (Alloy) shows the effect of alloy scattering at the same level of approximation. The data are arbitrarily normalized to the value of the strongest intrinsic defect scattering channel. We emphasize that the defect concentrations for a 216-atom cell are at least a factor of 1000 too large in comparison to realistic concentration. Thus, alloy scattering clearly dominates over defect scattering.

Here the scattering strength is strongly dependent on the Zn concentration and increases monotonically. As expected, the effect of alloying on carrier scattering far outweighs defect scattering for any realistic defect concentration (which is on the order of 10^{17} cm^{-3} ; see, e.g., Ref. 54).

The comparison between the mean-square displacements of the Cd and Te sublattices from the harmonic model, molecular dynamic simulations, and experiment⁵⁵ are displayed in Fig. 10. The corresponding contribution to carrier scattering from phonons is shown in Fig. 11. The harmonic

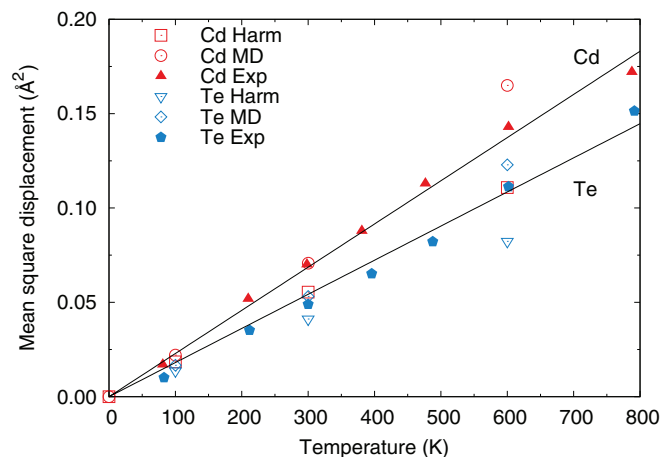


FIG. 10. (Color online) Mean-square displacements of the Cd and Te sublattices from the harmonic model, MD simulations, and experiment.⁵⁵ The lines are drawn to guide the eye.

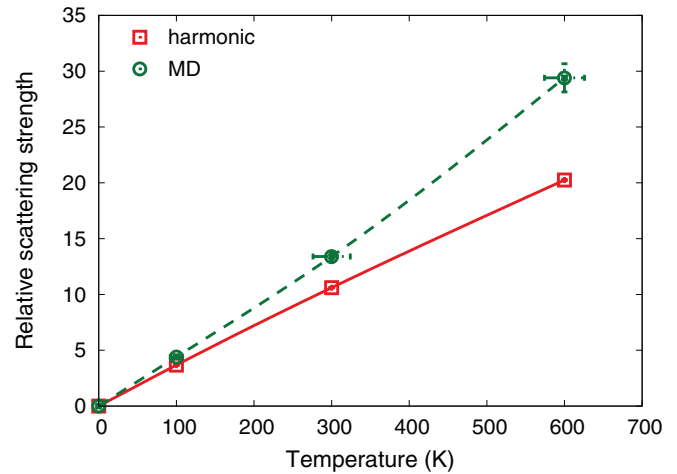


FIG. 11. (Color online) Relative thermal scattering strengths (unscaled, see the Appendix) for CdTe as a function of temperature, calculated using both a harmonic approximation (solid line) and molecular dynamics simulations (dashed line).

approximation results exhibit a linear temperature dependence, whereas the MD data curve upward due to anharmonic effects. The deviation between harmonic and MD data points is a measure for the degree of anharmonicity, which already at room temperature amounts to 20% of the relative scattering strength. We note, however, that Fig. 11 shows the unscaled data in light of the outlined derivation in the Appendix. Thus, by conservatively assuming a scaling factor of $\pi^2/16$ [see Eq. (A3)] the corresponding cross-over temperature is approximately 150 K.

IV. CONCLUSIONS

The effects of alloying on pure bulk properties, thermodynamic properties of intrinsic point defects, and carrier scattering rates were examined for CZT alloys with up to 13% Zn. The defect formation energies of the most important intrinsic defects increase or remain constant with increasing Zn content with the exception of the Cd vacancy and to some extent the neutral Te vacancy. The latter defect also deviates from the standard inward relaxation of nearest-neighbor atoms in the presence of Zn NNs, creating a very complex and rich energy landscape as a function of Zn coordination (reminiscent of the effects of In coordination in the dilute nitride alloy GaInNAs^{56,57}). A previously reported relation between strained CdTe and CZT¹⁹ was revisited, revealing that the dependence of defect formation energies on Zn concentration is at most qualitatively similar to the behavior deduced from volumetrically strained CdTe.

Optical transition levels exhibit small variations with Zn content and introduce no additional defect levels within the gap. Thus Zn alloying should not increase the defect-mediated electron-hole recombinations.

The relative carrier scattering rate concept introduced in Ref. 30 was applied here to alloy and phonon scattering as well as defect scattering. The intrinsic defect scattering in CZT was shown to be very similar to pure CdTe. The scattering rates in CdTe were shown to serve as a lower bound for all defects except the Te vacancy. The latter behavior was

explained in terms of local lattice relaxation associated with the distribution of Zn NNs. We furthermore established the relative importance of the different scattering channels and showed that at ambient conditions and moderate defect concentrations, phonon scattering dominates the electric transport properties.

ACKNOWLEDGMENTS

Dr. Sadigh and Dr. Oettel are acknowledged for fruitful discussions on phonon scattering. This work was performed under the auspices of the US Department of Energy by Lawrence Livermore National Laboratory under Contract DE-AC52-07NA27344, with support from the National Nuclear Security Administration Office of Nonproliferation and Verification Research and Development (NA-22).

APPENDIX

In the following we will motivate the use of difference potentials from MD simulations for phonon scattering. The electron-phonon interaction is given by^{58,59}

$$H_{e-ph} = H_{el}(\{\mathbf{r}\}, \{\mathbf{Q}\}) - H_{el}(\{\mathbf{r}\}, \{\mathbf{Q}_0\}),$$

where $\{\mathbf{r}\}$ and $\{\mathbf{Q}\}$ are shorthand for all electron and phonon coordinates, respectively. The index 0 denotes equilibrium (zero-Kelvin) ionic positions. Assuming that the electronic initial and final states are independent of phonon coordinates the relevant matrix element, to be used in Fermi's Golden Rule, is then

$$\langle f | H_{e-ph} | i \rangle = \int d\mathbf{r} \psi_{el,f}^* \psi_{el,i} \int d\mathbf{Q} \phi_{vib,f}^* H_{e-ph} \psi_{vib,i}.$$

Note that the integration is made over all electron and phonon coordinates. We now make the customary linear approximation

$$H_{e-ph} \approx \sum_i \mathbf{Q}^i \cdot \left. \frac{\partial V_{el}}{\partial \mathbf{Q}^i} \right|_{\{\mathbf{Q}_0\}},$$

where i is shorthand for phonon mode and polarization. For clarity we will in the following discuss a single mode of the quantum harmonic oscillator in one dimension, but the result is easily generalized. Thus, the vibronic integral is nonzero if the vibrational quantum numbers in initial and final states differs by one;

$$L_1 = \int dQ \phi_{vib,m}^* Q \phi_{vib,n} = \begin{cases} \sqrt{\frac{n+1}{2}}, & n = m + 1, \\ \sqrt{\frac{n}{2}}, & n = m - 1. \end{cases} \quad (\text{A1})$$

At large temperatures, both values of course tend to $\sqrt{n/2}$. Again assuming that the MD run is made for a system having a single one-dimensional harmonic phonon we note that the sampling over the configuration space samples the integral

$$L_2 = \int dQ \phi_{vib,m}^2 |Q|. \quad (\text{A2})$$

This integral is now, because of the absolute value of Q , nonzero. The key question now concerns the asymptotic ($n \rightarrow \infty$) behaviors of the integrals in Eqs. (A1) and (A2). At first guess it is reasonable to assume that they scale similarly. This is illustrated in Fig. 12, where we plot the integrands of L_1 ($n = m + 1$, red filled curve) and L_2 (blue solid line) for increasing quantum numbers n .

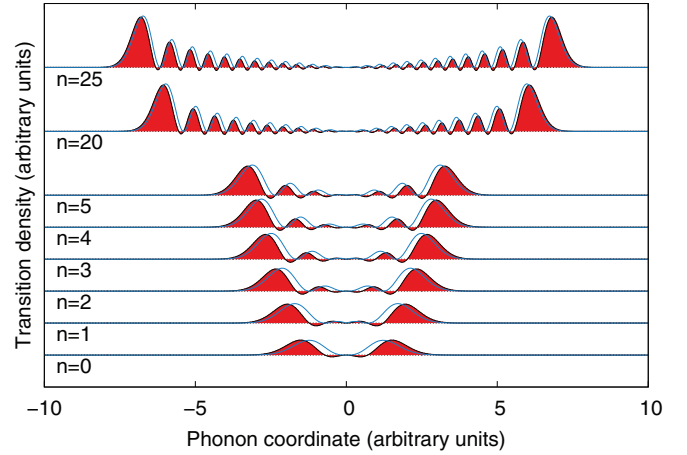


FIG. 12. (Color online) Transition densities, as defined by the integrands of L_1 ($n = m + 1$, red filled curve) and L_2 (blue solid line) of Eqs. (A1) and (A2), respectively.

After some algebra, we however find that

$$L_2 = \frac{2^n \sqrt{\pi}}{n!} \left(\frac{2n+1}{\Gamma(\frac{1-n}{2})^2} + \frac{4}{\Gamma(-\frac{n}{2})^2} \right).$$

Although not completely obvious from a quick glance, this expression possesses the same asymptotic behavior as L_1 , see Fig. 13. We note, however, that they are related by a scaling factor which is given by

$$\lim_{n \rightarrow \infty} \frac{L_2}{L_1} = \frac{4}{\pi} \approx 1.27. \quad (\text{A3})$$

A closer inspection of Fig. 12 indeed reveals that the integrand of L_2 is always strictly positive, whereas the integrand of L_1 can take negative values due to the difference in quantum numbers of the two wave functions. Thus, the MD scattering strengths are overestimated by a factor of ~ 1.3 – 1.6 . Fortunately, this scaling factor turns out to have little bearing on the predictions of the relative ordering of scattering strengths at room temperature.

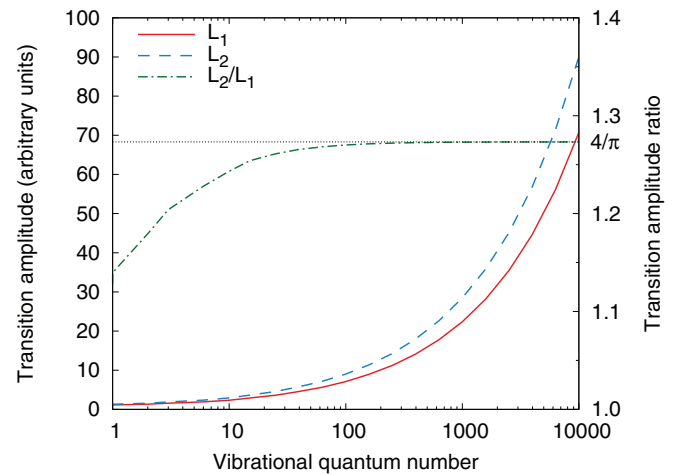


FIG. 13. (Color online) Transition amplitudes L_1 (red solid line) and L_2 (blue dashed) as function of the vibrational quantum number n . Their ratio approaches $4/\pi$ (green dashed-dotted line, right y-axis).

*aberg2@llnl.gov

- ¹J. Britt and C. Ferekides, *Appl. Phys. Lett.* **62**, 2851 (1993).
- ²G. Knoll, *Radiation Detection and Measurement*, 4th ed. (Wiley, New York, 2010).
- ³*CdTe and Related Compounds; Physics, Defects, Hetero- and Nanostructures, Crystal Growth, Surfaces and Applications: Crystal Growth, Surfaces and Applications*, European Materials Research Society Series, edited by R. Triboulet and P. Siffert (Elsevier Science, New York, 2009).
- ⁴S. Del Sordo, L. Abbene, E. Caroli, A. M. Mancini, A. Zappettini, and P. Ubertini, *Sensors* **9**, 3491 (2009).
- ⁵A. Owens, *J. Sync. Rad.* **13**, 143 (2006).
- ⁶R. Redus, J. Pantazis, T. Pantazis, A. Huber, and B. Cross, *IEEE Trans. Nucl. Sci.* **56**, 2524 (2009).
- ⁷T. Schlesinger, J. Toney, H. Yoon, E. Lee, B. Brunett, L. Franks, and R. James, *Mater. Sci. Eng. R Rep.* **32**, 103 (2001).
- ⁸A. Melnikov, A. Sigov, K. Vorotilov, A. Davydov, L. Topalova, and N. Zhavoronkov, *J. Cryst. Growth* **197**, 666 (1999).
- ⁹F. Zhang, Z. He, D. Xu, G. Knoll, D. Wehe, and J. Berry, *IEEE Trans. Nucl. Sci.* **51**, 2427 (2004).
- ¹⁰S. A. Awadalla, H. Chen, J. Mackenzie, P. Lu, K. Iniewski, P. Marthandam, R. Redden, G. Bindley, Z. He, F. Zhang, M. Groza, A. Burger, D. R. Mayo, and C. L. Sullivan, in *Nuclear Science Symposium Conference Record, 2008. IEEE NSS '08* (IEEE, New York, 2008), p. 58.
- ¹¹P. Erhart and K. Albe, *J. Appl. Phys.* **104**, 044315 (2008).
- ¹²P. Erhart, D. Åberg, B. W. Sturm, K.-J. Wu, and V. Lordi, *Appl. Phys. Lett.* **97**, 142104 (2010).
- ¹³W. Shockley and W. T. Read, *Phys. Rev.* **87**, 835 (1952).
- ¹⁴L. Nordheim, *Ann. Phys. (Berlin)* **9**, 607 (1931).
- ¹⁵L. Nordheim, *Ann. Phys. (Berlin)* **9**, 641 (1931).
- ¹⁶P. Soven, *Phys. Rev.* **156**, 809 (1967).
- ¹⁷A. Zunger, S.-H. Wei, L. G. Ferreira, and J. E. Bernard, *Phys. Rev. Lett.* **65**, 353 (1990). S.-H. Wei, L. G. Ferreira, J. E. Bernard, and A. Zunger, *Phys. Rev. B* **42**, 9622 (1990).
- ¹⁸D. B. Laks, L. G. Ferreira, S. Froyen, and A. Zunger, *Phys. Rev. B* **46**, 12587 (1992).
- ¹⁹A. Carvalho, A. K. Tagantsev, S. Öberg, P. R. Briddon, and N. Setter, *Phys. Rev. B* **81**, 075215 (2010).
- ²⁰A. R. Allnatt and A. B. Lidiard, *Atomic Transport in Solids* (Cambridge University, Cambridge, England, 2003).
- ²¹D. Åberg, P. Erhart, A. J. Williamson, and V. Lordi, *Phys. Rev. B* **77**, 165206 (2008).
- ²²G.-X. Qian, R. M. Martin, and D. J. Chadi, *Phys. Rev. B* **38**, 7649 (1988).
- ²³S. B. Zhang and J. E. Northrup, *Phys. Rev. Lett.* **67**, 2339 (1991).
- ²⁴C. Persson, Y.-J. Zhao, S. Lany, and A. Zunger, *Phys. Rev. B* **72**, 035211 (2005).
- ²⁵L. E. Ramos, J. Furthmüller, F. Bechstedt, L. M. R. Scolfaro, and J. R. Leite, *J. Phys. Condens. Matter* **14**, 2577 (2002).
- ²⁶G. Mahan, *Many-Particle Physics*, Physics of Solids and Liquids Series, 3rd ed. (Kluwer Academic/Plenum, New York, 2000).
- ²⁷P. Yu and M. Cardona, *Fundamentals of Semiconductors: Physics and Materials Properties*, Graduate Texts in Physics (Springer, New York, 2010).
- ²⁸F. Murphy-Armando and S. Fahy, *Phys. Rev. Lett.* **97**, 096606 (2006).
- ²⁹S. Joyce, F. Murphy-Armando, and S. Fahy, *Phys. Rev. B* **75**, 155201 (2007).
- ³⁰V. Lordi, P. Erhart, and D. Åberg, *Phys. Rev. B* **81**, 235204 (2010).
- ³¹G. Eckhold, *International Tables for Crystallography, Physical Properties of Crystals* (Wiley, New York, 2004) Chap. 2.1.
- ³²G. Kresse and J. Hafner, *Phys. Rev. B* **47**, 558 (1993). **49**, 14251 (1994). G. Kresse and J. Furthmüller, *ibid.* **54**, 11169 (1996). *Comput. Mater. Sci.* **6**, 15 (1996).
- ³³D. Vanderbilt, *Phys. Rev. B* **41**, 7892 (1990).
- ³⁴H. J. Monkhorst and J. D. Pack, *Phys. Rev. B* **13**, 5188 (1976).
- ³⁵The VCA for total energies, forces, and stress was implemented into VASP using the approach of Bellaïche and Vanderbilt.⁶⁰
- ³⁶G. Makov and M. C. Payne, *Phys. Rev. B* **51**, 4014 (1995).
- ³⁷S.-H. Wei and S. B. Zhang, *Phys. Rev. B* **66**, 155211 (2002).
- ³⁸P. Erhart, D. Åberg, and V. Lordi (unpublished).
- ³⁹A.-B. Chen and A. Sher, *Semiconductor Alloys: Physics and Materials Engineering*, Microdevices Series (Plenum, New York, 1995).
- ⁴⁰A. Marbeuf, R. Druilhe, R. Triboulet, and G. Patriarche, *J. Cryst. Growth* **117**, 10 (1992).
- ⁴¹S.-H. Wei, L. G. Ferreira, and A. Zunger, *Phys. Rev. B* **41**, 8240 (1990).
- ⁴²N. Motta, A. Balzarotti, P. Letardi, A. Kisiel, M. Czyzyk, M. Zimnal-Starnawska, and M. Podogorny, *J. Cryst. Growth* **72**, 205 (1985).
- ⁴³O. Zelaya-Angel, J. G. Mendoza-Alvarez, M. Becerril, H. Navarro-Contreras, and L. Tirado-Mejía, *J. Appl. Phys.* **95**, 6284 (2004).
- ⁴⁴J. Kimmerle, R. Menner, H. Scock, and A. Valera, *Thin Solid Films* **126**, 23 (1985).
- ⁴⁵K. Prasada Rao, O. M. Hussain, K. T. R. Reddy, P. S. Reddy, S. Uthanna, B. S. Naidu, and P. J. Reddy, *Opt. Mater.* **5**, 63 (1996).
- ⁴⁶V. A. Tyagai, O. V. Snitko, V. N. Bondarenko, N. I. Vitrikhovskii, V. B. Popov, and N. Krasiko, *Sov. Phys. Solid State* **16**, 885 (1974).
- ⁴⁷K. K. Chattopadhyay, A. Sarkar, S. Chaudhuri, and A. K. Pal, *Vacuum* **42**, 1113 (1991).
- ⁴⁸F. G. Sánchez-Almazan, H. Navarro-Contreras, G. Ramírez-Flores, M. A. Vidal, O. Zelaya-Angel, M. E. Rodríguez, and R. Baquero, *J. Appl. Phys.* **79**, 7713 (1996).
- ⁴⁹J. L. Reno and E. D. Jones, *Phys. Rev. B* **45**, 1440 (1992).
- ⁵⁰J. Bernholc and S. T. Pantelides, *Phys. Rev. B* **18**, 1780 (1978).
- ⁵¹D. N. Talwar and C. S. Ting, *Phys. Rev. B* **25**, 2660 (1982).
- ⁵²M. J. Puska, *J. Phys. Condens. Matter* **1**, 7347 (1989).
- ⁵³S. Lany, V. Ostheimer, H. Wolf, and T. Wichert, *Phys. B Cond. Matter* **308-310**, 958 (2001).
- ⁵⁴P. Rudolph, M. Mühlberg, M. Neubert, T. Boeck, P. Möck, L. Parthier, K. Jacobs, and E. Kropp, *J. Cryst. Growth* **118**, 204 (1992).
- ⁵⁵V. T. Bublik and S. S. Gorelik, *Kristall und Technik* **12**, 859 (1977).
- ⁵⁶V. Lordi, V. Gambin, S. Friedrich, T. Funk, T. Takizawa, K. Uno, and J. S. Harris, *Phys. Rev. Lett.* **90**, 145505 (2003).
- ⁵⁷V. Lordi, H. B. Yuen, S. R. Bank, M. A. Wistey, J. S. Harris, and S. Friedrich, *Phys. Rev. B* **71**, 125309 (2005).
- ⁵⁸F. Giustino, J. R. Yates, I. Souza, M. L. Cohen, and G. Louie, *Phys. Rev. Lett.* **98**, 047005 (2007).
- ⁵⁹J. Sjakste, V. Tyuterev, and N. Vast, *Appl. Phys. A* **86**, 301 (2007).
- ⁶⁰L. Bellaïche and D. Vanderbilt, *Phys. Rev. B* **61**, 7877 (2000).