



U R B A N  
P A T T I N A  
A N T O N  
K O I L B E

# URBAN PATINA, ANTON KOLBE, CTH 2012

## City as Motif

This diploma work wishes to explore new approaches to city development with a persistent effort to bridge the role of the urban planner and the designer of specific solutions. It is to find rules and guidelines for planning with the sensibility and curiosity of the architect and to be an architect with a focus on street space and city scape rather than the architectural object. It is to try to see a new development area as a city in itself with its own narrative.

## Gothenburg

The skeppsbron area of Gothenburg is soon to become developed with potential for one of the first true city-spaces in contact with the harbor. The event-city vision provided by the politicians and entrepreneurs has also lead to event-scale plans, making enormous undefined outdoor spaces and building blocks with the sea-side location as its assumed primary quality. One could say that this vision is a rather simplified view of what Gothenburg is and what it has. One could just as well tell the story of a grass-root city with diverse and cutting-edge cultural accumulation and expression.

## Street as space

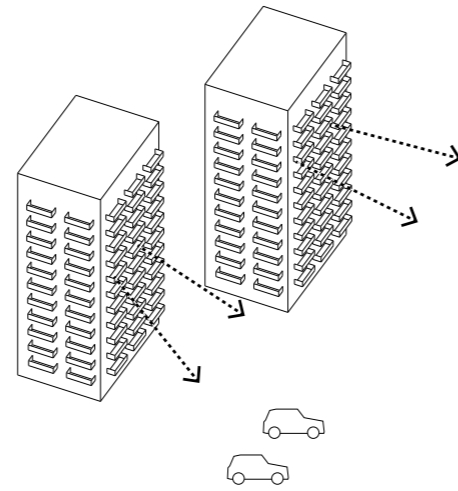
Narrow streets and spaces with varying building heights provides shelter from the windswept harbor situation and gives an interesting play of light in the different spaces. The street is the interface of the city and its inhabitants, the street has always been the most pure form of public space. The Streets are designed and programmed to have various tempo, modus and energies and at the same time be an appropriate and effective grid in the urban context.

## Urban Patina

The project wants to acknowledge the importance of small scale commercial, public and recreational activities and the superimposing of functions - programmatic as well as in physical manifestation, in order to assist the progress of a the citizens to "move in" to and start appropriating a new part of the city. The patina metaphor refers to factors such as scale, porosity, layering and complexity which is presupposed for an object to have a value-adding aging but also for an urban development to find it's own character of usage, its specific spots and the platform for interpersonal nuggets or encounters and the various colors of human presence.

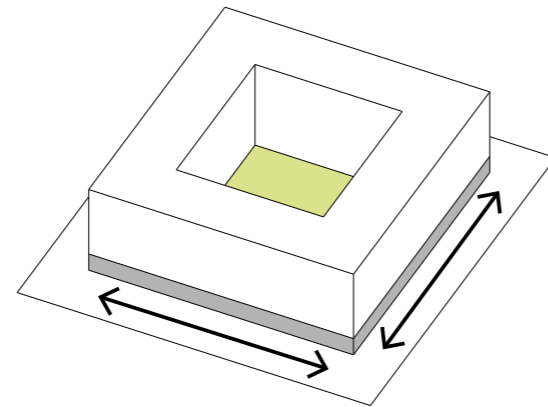
DEVELOPER APPROACH TO RIVERSIDE-SITES:

- Maximized views to raise apartment-prices
- Lack of interest in city-scape and urban qualities
- Over-sized and desolate outdoor spaces



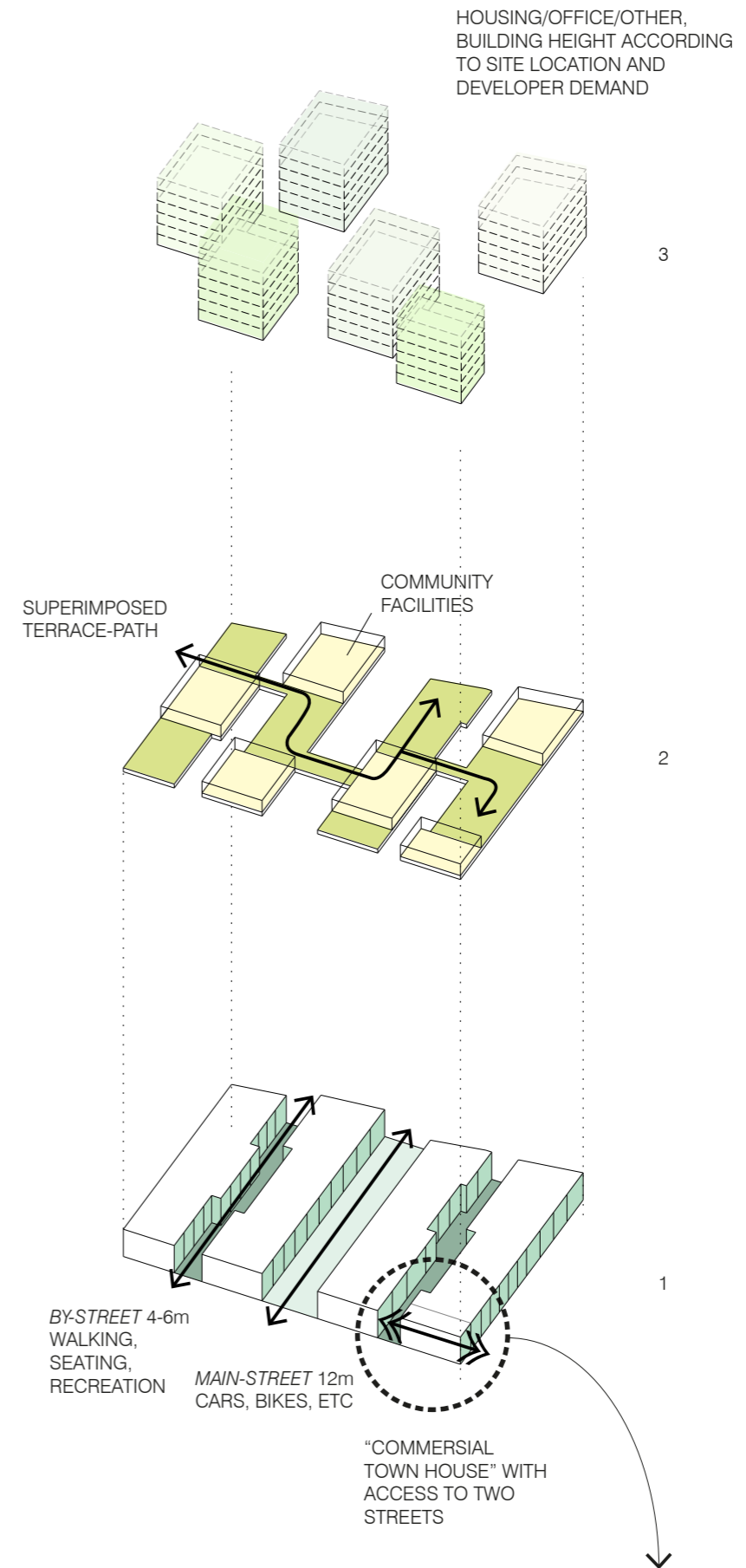
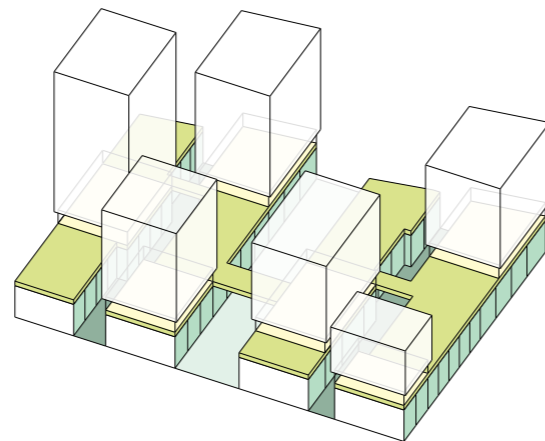
SWEDISH URBAN PLANNER DOGMA:

- Monolithic housing block with secluded inner yard
- Exclusive commercial facilities for well-established businesses
- Streets as roads for cars

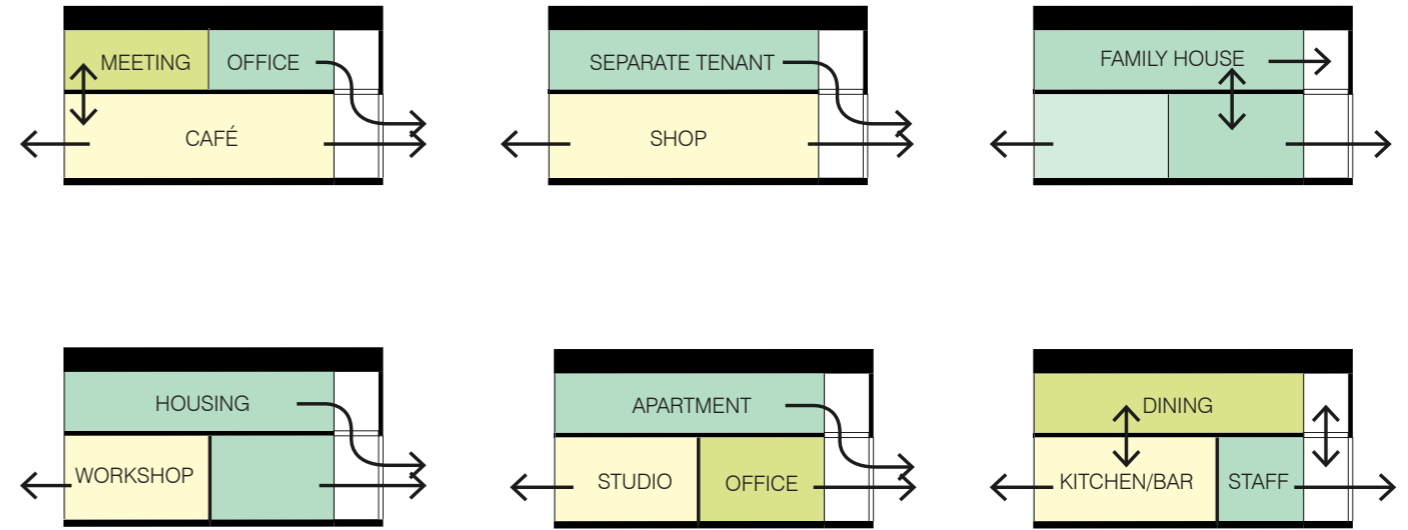
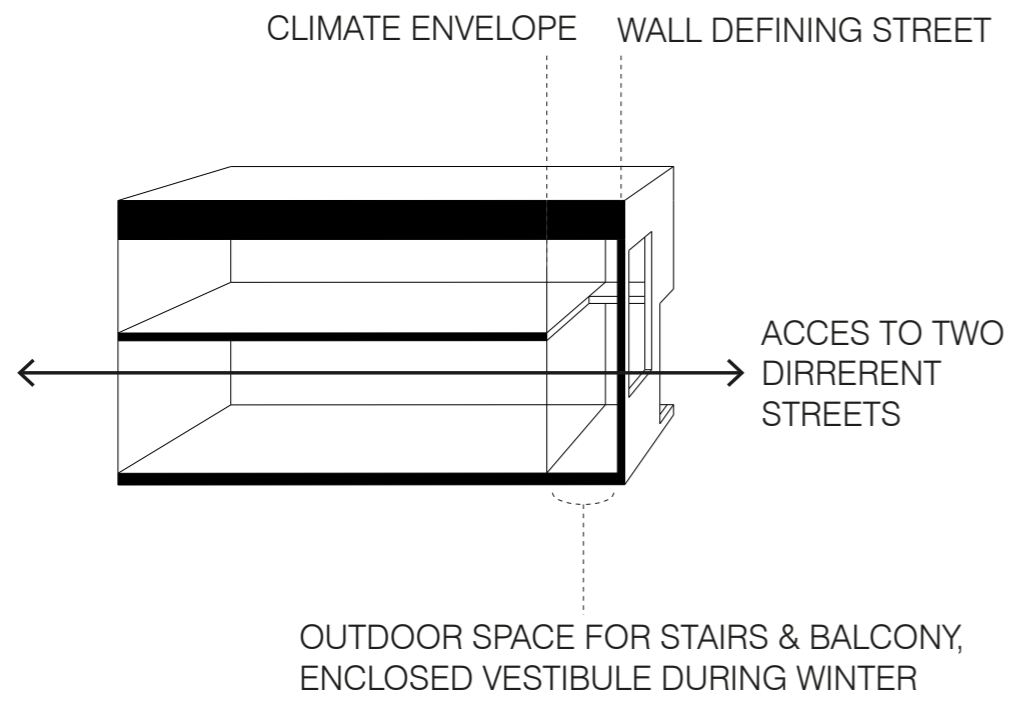


PROPOSAL:

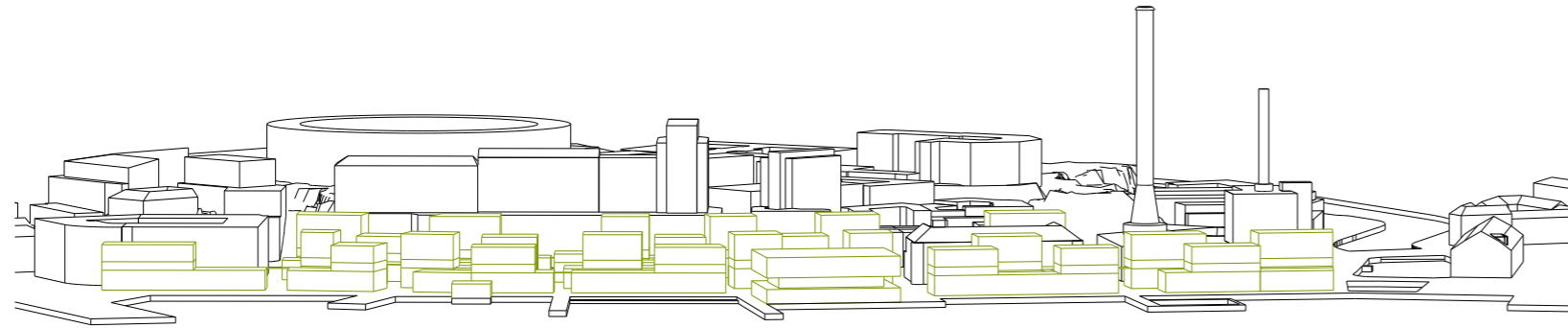
- Increased street contact & mixed scale commercial activities
- Weather sheltering scale
- Variation and sequences of space
- Intimate public spaces
- Layers of program in the streets
- > streets as functional space!



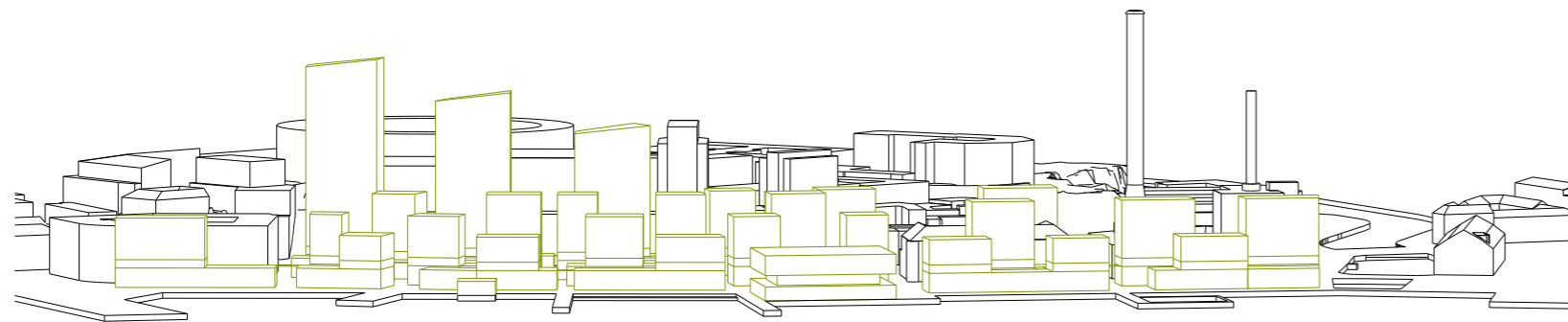
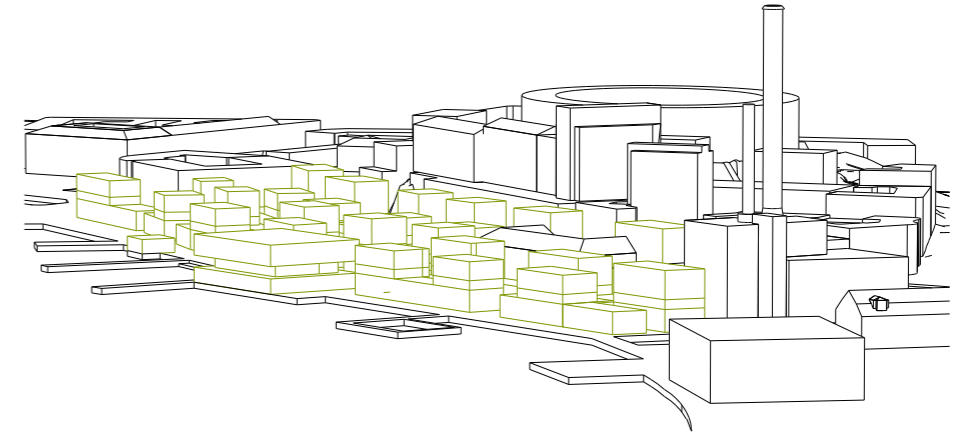
COMMERSIAL TOWN-HOUSE TYPOLOGY



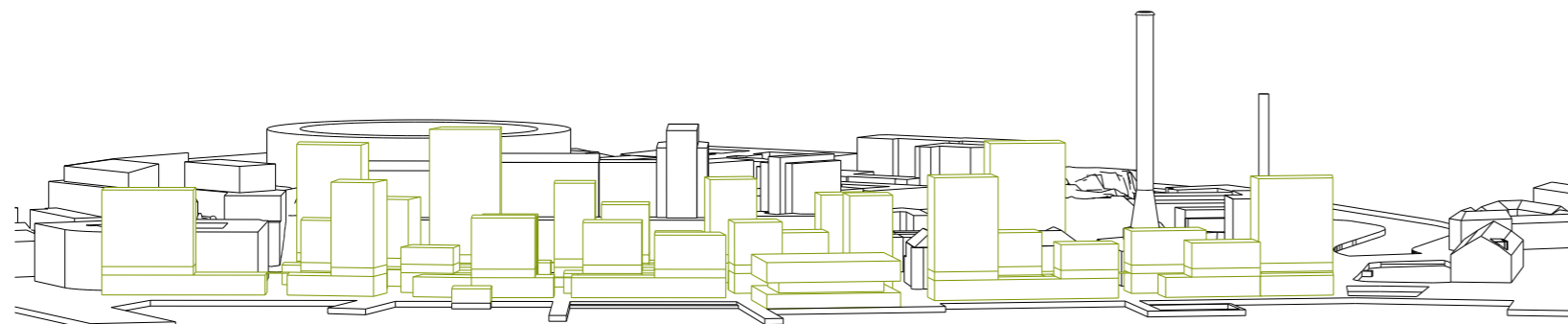
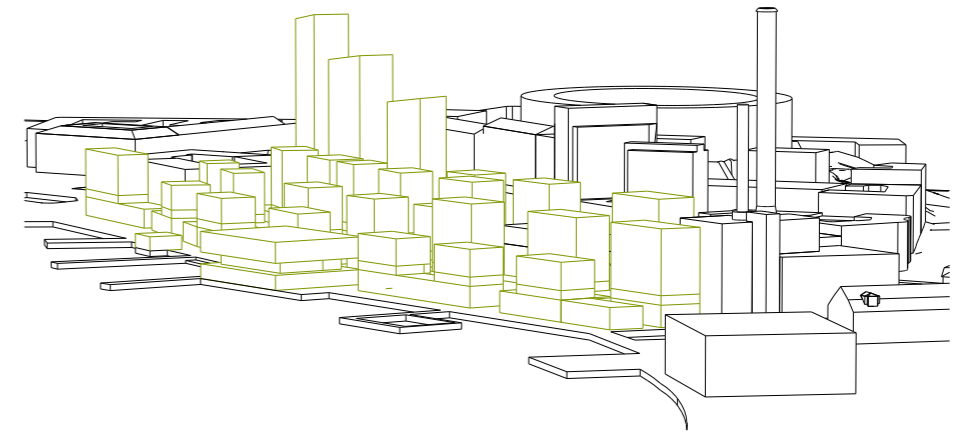
BUILDING AREA TO SITE RATIO



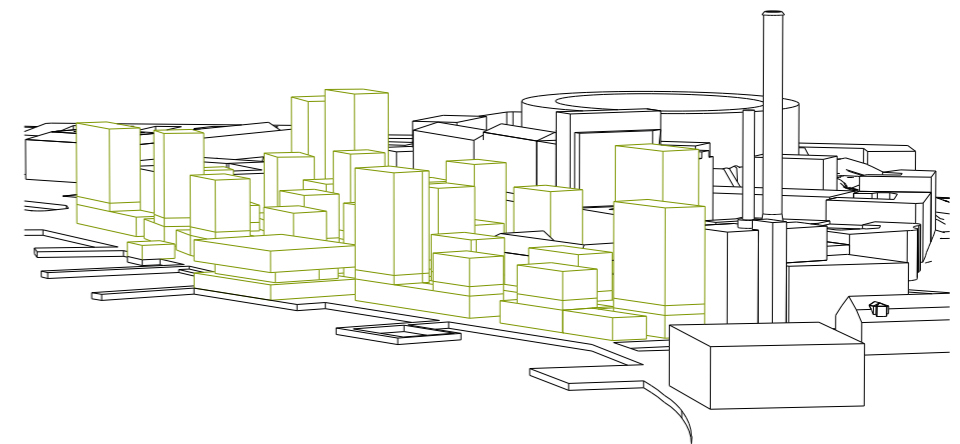
"CHARM" - 200 % BUILT ON ENTIRE SITE



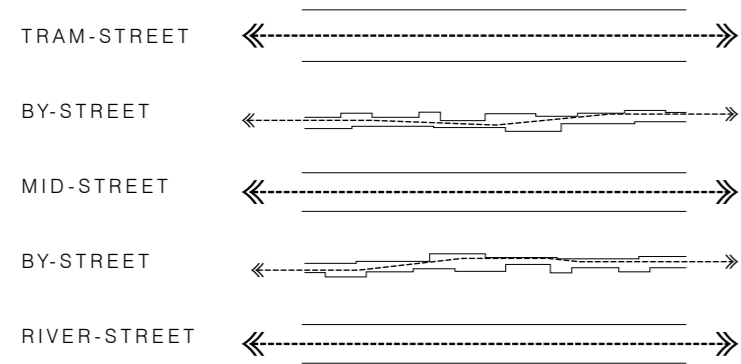
"ORCHESTRA" - 300 % BUILT ON ENTIRE SITE



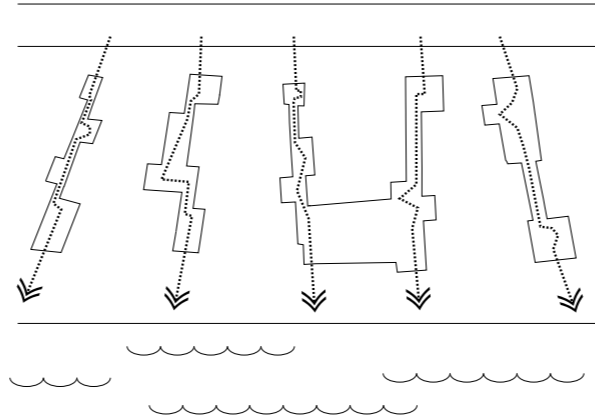
"TOKYO-STYLE" - 300 % BUILT ON ENTIRE SITE



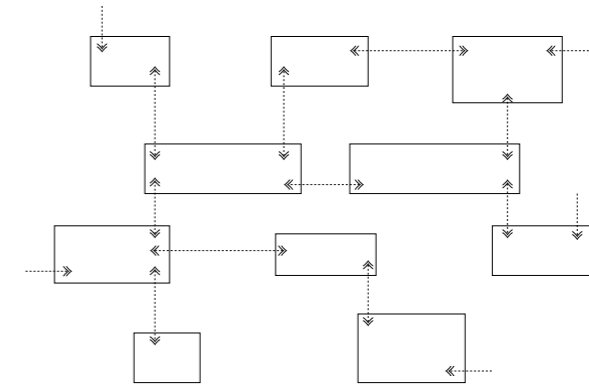
STREETS



RIVER-ALLEYS



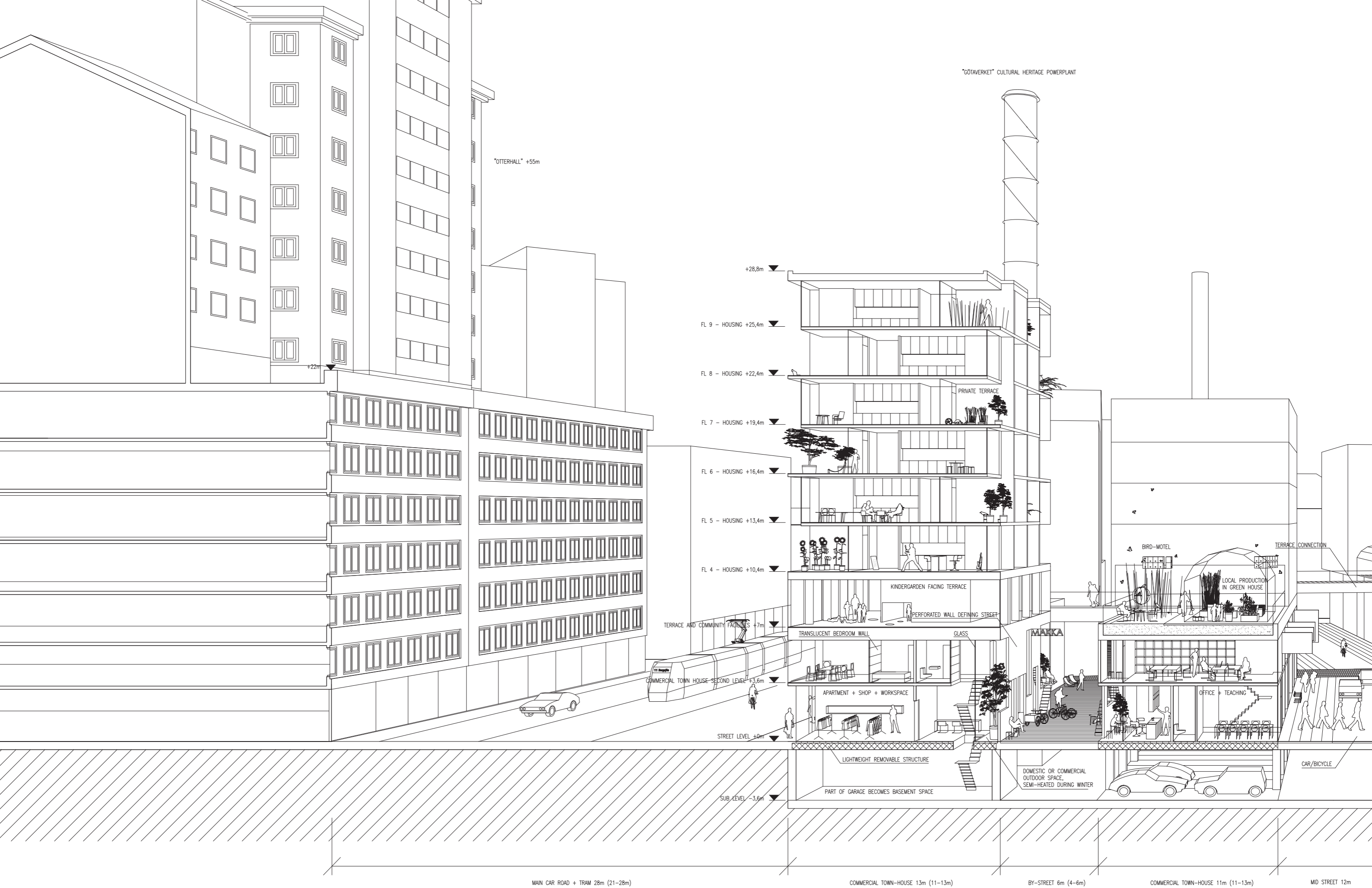
PARK TERRACES



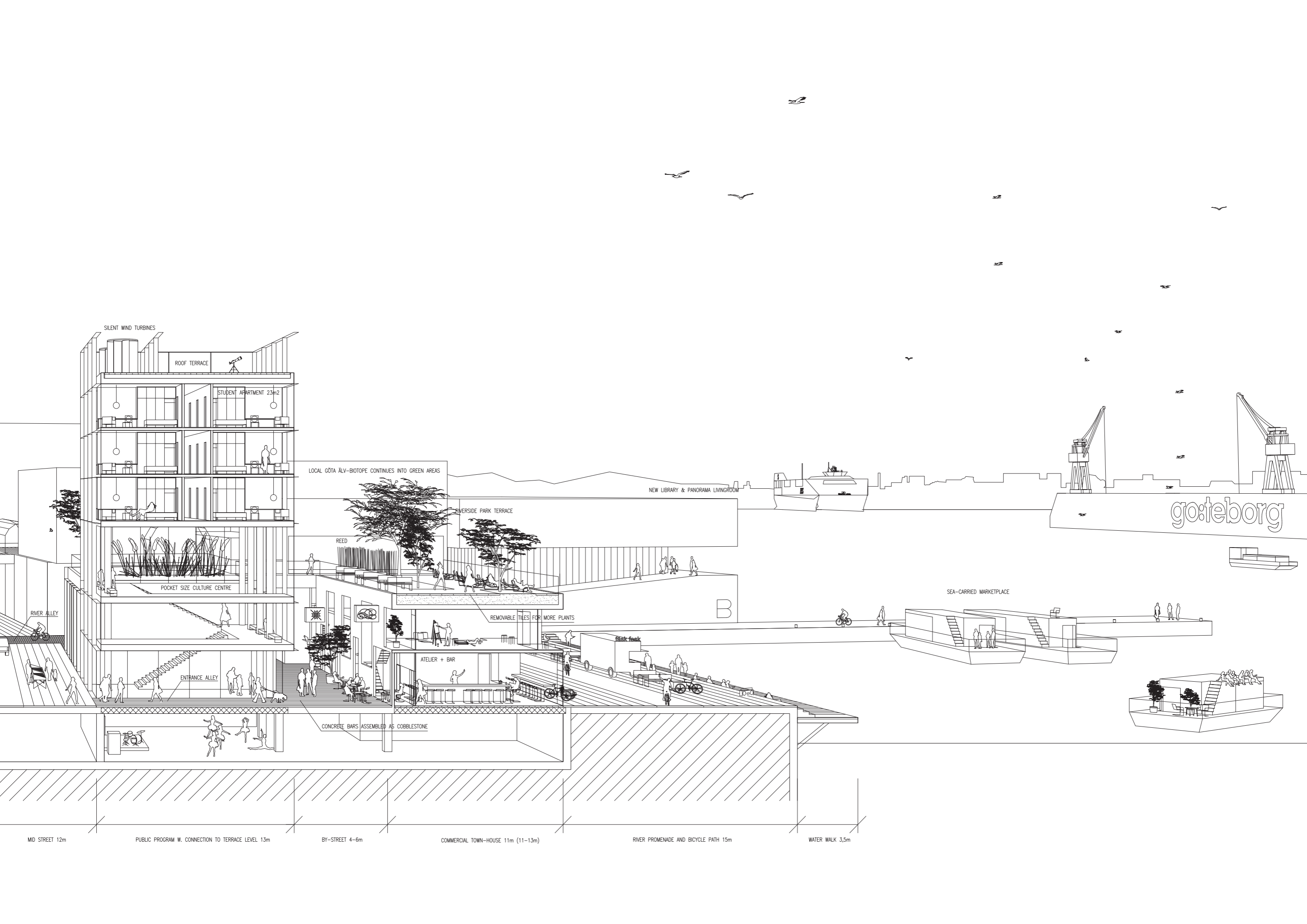
GOTHENBURG HARBOR CRANES



SITE PLAN, SKEPPSBRON, 1:2000







SILENT WIND TURBINES

ROOF TERRACE

STUDENT APARTMENT 23m<sup>2</sup>

LOCAL GÖTA ÄLV-BIOTOPE CONTINUES INTO GREEN AREAS

NEW LIBRARY & PANORAMA LIVINGROOM

RIVERSIDE PARK TERRACE

REED

POCKET SIZE CULTURE CENTRE

RIVER ALLEY

ENTRANCE ALLEY

REMOVABLE TILES FOR MORE PLANTS

ATELIER + BAR

CONCRETE BARS ASSEMBLED AS COBBLESTONE

SEA-CARRIED MARKETPLACE

go:teborg

MID STREET 12m PUBLIC PROGRAM W. CONNECTION TO TERRACE LEVEL 13m BY-STREET 4-6m COMMERCIAL TOWN-HOUSE 11m (11-13m) RIVER PROMENADE AND BICYCLE PATH 15m WATER WALK 3,5m

MODELSTUDY OF "BY STREET"

